

Datasheet for ABIN6736717
anti-EPB42 antibody (AA 448-497)

2 Images

[Go to Product page](#)

Overview

Quantity:	100 µL
Target:	EPB42
Binding Specificity:	AA 448-497
Reactivity:	Human, Rat, Guinea Pig, Bat, Monkey
Host:	Rabbit
Clonality:	Polyclonal
Conjugate:	This EPB42 antibody is un-conjugated
Application:	Western Blotting (WB), Immunohistochemistry (IHC), Immunohistochemistry (Paraffin-embedded Sections) (IHC (p))

Product Details

Brand:	IHC-plus™
Immunogen:	Synthetic peptide located between aa448-497 of human EPB42 (P16452-2, NP_000110). Percent identity by BLAST analysis: Human, Chimpanzee, Gorilla, Gibbon, Monkey, Marmoset, Rat, Bat (100%), Mouse, Dog, Rabbit, Horse, Zebra finch (92%), Galago (84%), Chicken (80%). Type of Immunogen: Synthetic peptide
Isotype:	IgG
Specificity:	Human EPB42 / Pallidin
Predicted Reactivity:	Percent identity by BLAST analysis: Human, Rat (100%) Mouse, Dog, Rabbit, Horse (92%) Chicken (80%).

Product Details

Purification: Immunoaffinity purified

Target Details

Target: EPB42

Alternative Name: EPB42 ([EPB42 Products](#))

Background: Name/Gene ID: EPB42

Synonyms: EPB42, E42P, Erythrocyte protein 4.2, p4.2, Pallidin, SPH5, Pa

Gene ID: 2038

NCBI Accession: [NP_000110](#)

UniProt: [P16452](#)

Pathways: [Transition Metal Ion Homeostasis](#)

Application Details

Application Notes: Approved: IHC, IHC-P (5 µg/mL), WB (0.2 - 1 µg/mL)

Usage: Immunohistochemistry: This antibody was validated for use in immunohistochemistry on a panel of 21 formalin-fixed, paraffin-embedded (FFPE) human tissues after heat induced antigen retrieval in pH 6.0 citrate buffer. After incubation with the primary antibody, slides were incubated with biotinylated secondary antibody, followed by alkaline phosphatase-streptavidin and chromogen. The stained slides were evaluated by a pathologist to confirm staining specificity. The optimal working concentration for this antibody was determined to be 5 µg/mL.

Comment: Target Species of Antibody: Human

Restrictions: For Research Use only

Handling

Format: Lyophilized

Reconstitution: After adding water, will consist of PBS buffer with 2 % sucrose

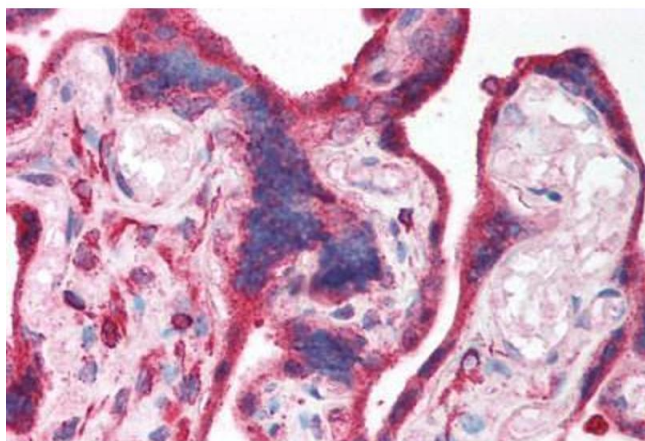
Concentration: Lot specific

Buffer: Lyophilized from PBS with 2 % sucrose

Handling

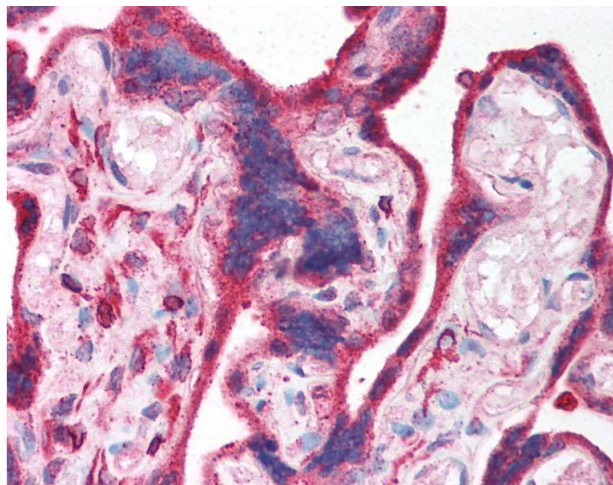
Handling Advice:	Avoid repeat freeze-thaw cycles.
Storage:	4 °C,-20 °C
Storage Comment:	Long term: -20°C, the use of 50% glycerol is recommended if storing aliquots in -20°C for long term use (up to 1 year) Short term (less than 1 week): 4°C. Avoid freeze-thaw cycles.

Images



Immunohistochemistry (Paraffin-embedded Sections)

Image 1. Human Placenta (formalin-fixed, paraffin-embedded) stained with EPB42 antibody ABIN214102 at 5 ug/ml followed by biotinylated goat anti-rabbit IgG secondary antibody ABIN481713, alkaline phosphatase-streptavidin and chromogen.



Immunohistochemistry

Image 2. Anti-EPB42 / Pallidin antibody IHC of human placenta. Immunohistochemistry of formalin-fixed, paraffin-embedded tissue after heat-induced antigen retrieval. Antibody concentration 5 ug/ml. This image was taken for the unconjugated form of this produ ...