

Datasheet for ABIN6736725  
**anti-GNB2L1 antibody (C-Term)**



[Go to Product page](#)

3 Images

## Overview

Quantity:	100 µL
Target:	GNB2L1
Binding Specificity:	C-Term
Reactivity:	Human, Mouse, Rat, Dog, Cow, Sheep, Rabbit, Guinea Pig, Zebrafish (Danio rerio), Chicken, Xenopus laevis, Pig, Bat, Monkey
Host:	Rabbit
Clonality:	Polyclonal
Conjugate:	This GNB2L1 antibody is un-conjugated
Application:	Western Blotting (WB), Immunohistochemistry (IHC), Immunohistochemistry (Paraffin-embedded Sections) (IHC (p))

## Product Details

Brand:	IHC-plus™
Immunogen:	Synthetic peptide from C-Terminus of human GNB2L1 (P63244, NP_006089). Percent identity by BLAST analysis: Human, Chimpanzee, Gorilla, Gibbon, Monkey, Marmoset, Mouse, Rat, Sheep, Elephant, Dog, Bovine, Bat, Rabbit, Pig, Opossum, Guinea pig, Turkey, Chicken, Platypus, Lizard, Xenopus, Trout, Catfish, Salmon, Smelt, Sablefish, Stickleback, Pike, Pufferfish, Zebrafish, Penicillium (100%), Sea squirt, Nematode (92%), Drosophila, Beetle (85%).  Type of Immunogen: Synthetic peptide
Isotype:	IgG

## Product Details

---

Specificity:	Human GNB2L1 / RACK1
Predicted Reactivity:	Percent identity by BLAST analysis: Human, Dog, Guinea pig, Chicken, Xenopus, Zebrafish (100%).
Purification:	Immunoaffinity purified

## Target Details

---

Target:	GNB2L1
Alternative Name:	GNB2L1 / RACK1 ( <a href="#">GNB2L1 Products</a> )
Background:	Name/Gene ID: RACK1  Synonyms: RACK1, H12.3, Gnb2-rs1, Proliferation-inducing gene 21, GNB2L1, HLC-7, Lung cancer oncogene 7, PIG21
Gene ID:	10399
NCBI Accession:	<a href="#">NP_006089</a>
UniProt:	<a href="#">P63244</a>
Pathways:	<a href="#">cAMP Metabolic Process</a> , <a href="#">Positive Regulation of Endopeptidase Activity</a>

## Application Details

---

Application Notes:	Approved: IHC, IHC-P (5 µg/mL), WB (0.2 - 1 µg/mL)  Usage: Immunohistochemistry: This antibody was validated for use in immunohistochemistry on a panel of 21 formalin-fixed, paraffin-embedded (FFPE) human tissues after heat induced antigen retrieval in pH 6.0 citrate buffer. After incubation with the primary antibody, slides were incubated with biotinylated secondary antibody, followed by alkaline phosphatase-streptavidin and chromogen. The stained slides were evaluated by a pathologist to confirm staining specificity. The optimal working concentration for this antibody was determined to be 5 µg/mL.
Comment:	Target Species of Antibody: Human
Restrictions:	For Research Use only

## Handling

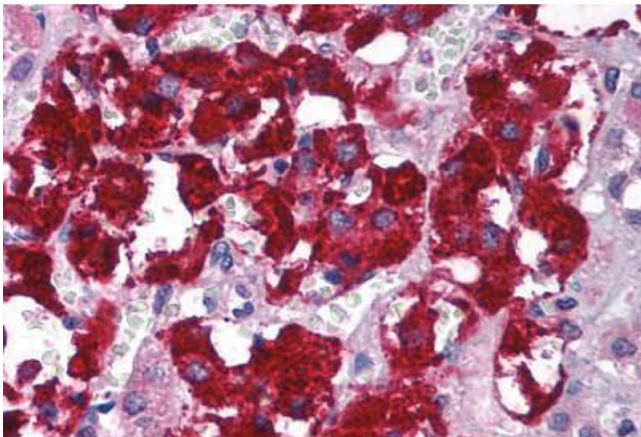
---

Format:	Lyophilized
---------	-------------

## Handling

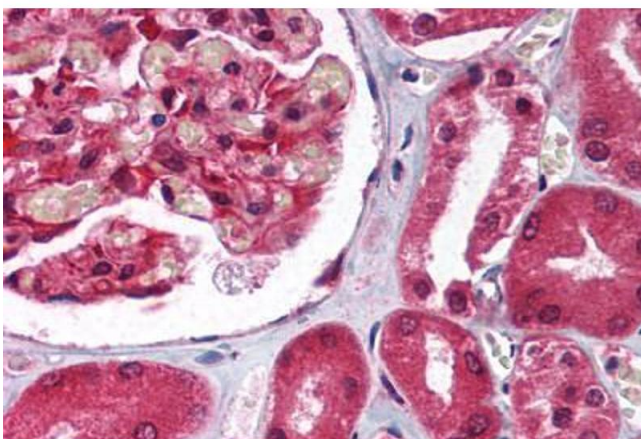
Reconstitution:	After adding water, will consist of PBS buffer with 2 % sucrose
Concentration:	Lot specific
Buffer:	Lyophilized from PBS with 2 % sucrose
Handling Advice:	avoid freeze thaw cycles.
Storage:	4 °C, -20 °C
Storage Comment:	Long term: -20°C, the use of 50% glycerol is recommended if storing aliquots in -20°C for long term use (up to 1 year) Short term (less than 1 week): 4°C. Avoid freeze-thaw cycles.

## Images



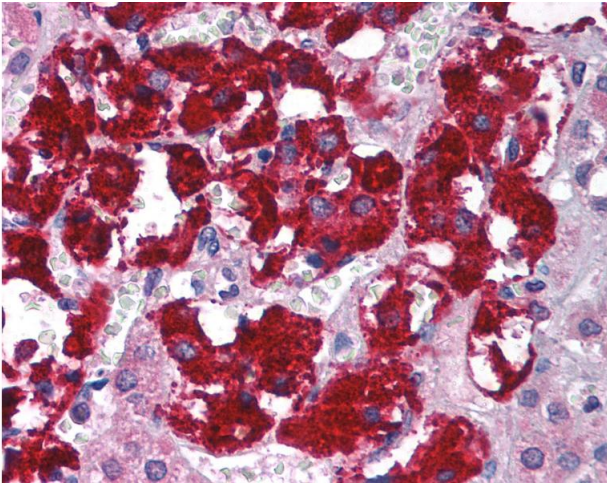
### Immunohistochemistry (Paraffin-embedded Sections)

**Image 1.** Human Adrenal (formalin-fixed, paraffin-embedded) stained with GNB2L1 antibody ABIN214111 at 5 ug/ml followed by biotinylated goat anti-rabbit IgG secondary antibody ABIN481713, alkaline phosphatase-streptavidin and chromogen.



### Immunohistochemistry (Paraffin-embedded Sections)

**Image 2.** Human Kidney (formalin-fixed, paraffin-embedded) stained with GNB2L1 antibody ABIN214111 at 5 ug/ml followed by biotinylated goat anti-rabbit IgG secondary antibody ABIN481713, alkaline phosphatase-streptavidin and chromogen.



### Immunohistochemistry

**Image 3.** Anti-RACK1 antibody IHC of human adrenal. Immunohistochemistry of formalin-fixed, paraffin-embedded tissue after heat-induced antigen retrieval. Antibody concentration 5 ug/ml. This image was taken for the unconjugated form of this product. Other fo ...