

Datasheet for ABIN6736726  
**anti-HIF1AN antibody (N-Term)**

## 3 Images

[Go to Product page](#)

## Overview

Quantity:	100 µL
Target:	HIF1AN
Binding Specificity:	N-Term
Reactivity:	Human, Rabbit, Horse
Host:	Rabbit
Clonality:	Polyclonal
Conjugate:	This HIF1AN antibody is un-conjugated
Application:	Western Blotting (WB), Immunohistochemistry (IHC), Immunohistochemistry (Paraffin-embedded Sections) (IHC (p))

## Product Details

Brand:	IHC-plus™
Immunogen:	Synthetic peptide from N-Terminus of human HIF1AN (Q9NWT6, NP_060372). Percent identity by BLAST analysis: Human (100%), Gorilla, Monkey (92%), Gibbon, Marmoset, Elephant, Rabbit, Horse (85%).  Type of Immunogen: Synthetic peptide
Isotype:	IgG
Specificity:	Human HIF1AN
Predicted Reactivity:	Percent identity by BLAST analysis: Human (92%) Rabbit, Horse (85%).
Purification:	Immunoaffinity purified

## Target Details

Target:	HIF1AN
Alternative Name:	HIF1AN ( <a href="#">HIF1AN Products</a> )
Background:	Name/Gene ID: HIF1AN  Synonyms: HIF1AN, Factor inhibiting HIF-1, FIH1, Factor inhibiting HIF1, FIH-1
Gene ID:	55662
NCBI Accession:	<a href="#">NP_060372</a>
UniProt:	<a href="#">Q9NWT6</a>
Pathways:	<a href="#">Regulation of Muscle Cell Differentiation</a> , <a href="#">Skeletal Muscle Fiber Development</a>

## Application Details

Application Notes:	Approved: IHC, IHC-P (5 µg/mL), WB (0.2 - 1 µg/mL)  Usage: Immunohistochemistry: This antibody was validated for use in immunohistochemistry on a panel of 21 formalin-fixed, paraffin-embedded (FFPE) human tissues after heat induced antigen retrieval in pH 6.0 citrate buffer. After incubation with the primary antibody, slides were incubated with biotinylated secondary antibody, followed by alkaline phosphatase-streptavidin and chromogen. The stained slides were evaluated by a pathologist to confirm staining specificity. The optimal working concentration for this antibody was determined to be 5 µg/mL.
Comment:	Target Species of Antibody: Human
Restrictions:	For Research Use only

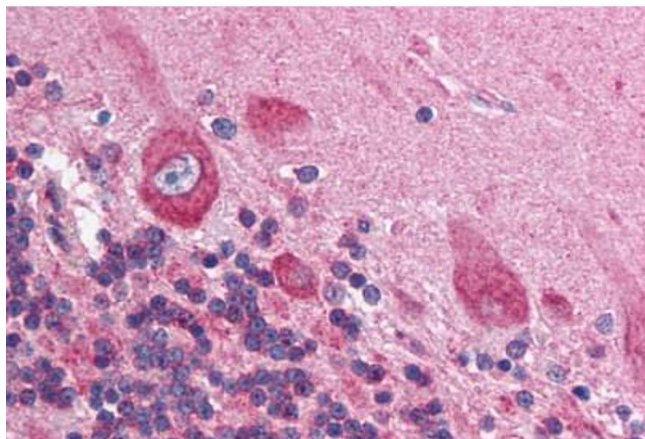
## Handling

Format:	Lyophilized
Reconstitution:	Distilled water
Concentration:	Lot specific
Buffer:	Lyophilized from PBS with 2 % sucrose
Handling Advice:	Avoid repeat freeze-thaw cycles.
Storage:	4 °C,-20 °C
Storage Comment:	Long term: -20°C, the use of 50% glycerol is recommended if storing aliquots in -20°C for long

term use (up to 1 year)

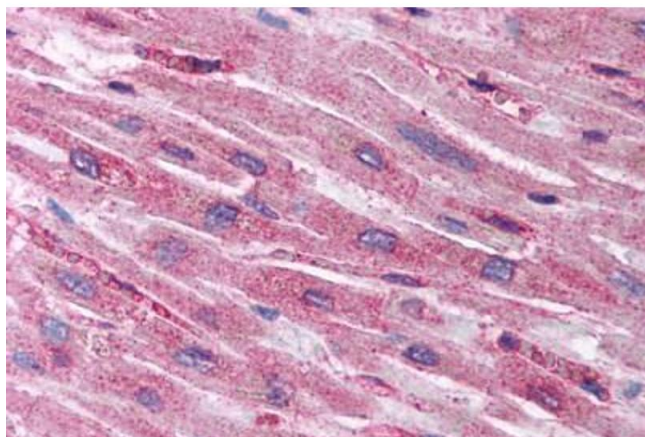
Short term (less than 1 week): 4°C. Avoid freeze-thaw cycles.

## Images



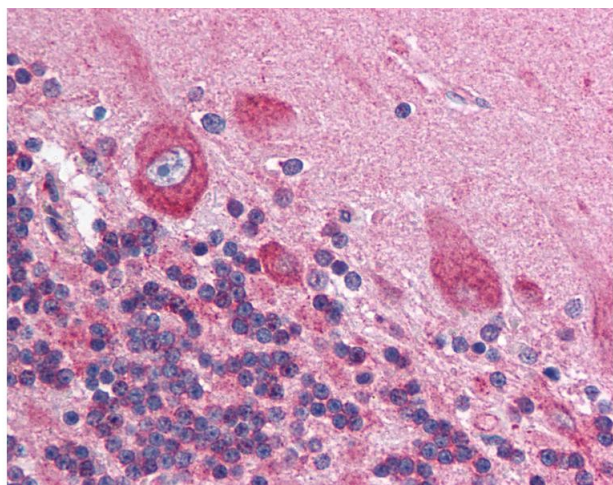
### Immunohistochemistry (Paraffin-embedded Sections)

**Image 1.** Human Brain, Cerebellum (formalin-fixed, paraffin-embedded) stained with HIF1AN antibody ABIN214112 at 5 ug/ml followed by biotinylated goat anti-rabbit IgG secondary antibody ABIN481713, alkaline phosphatase-streptavidin and chromogen.



### Immunohistochemistry

**Image 2.** Human Heart (formalin-fixed, paraffin-embedded) stained with HIF1AN antibody ABIN214112 at 5 ug/ml followed by biotinylated goat anti-rabbit IgG secondary antibody ABIN481713, alkaline phosphatase-streptavidin and chromogen.



### Immunohistochemistry

**Image 3.** Anti-HIF1AN antibody IHC of human brain, cerebellum. Immunohistochemistry of formalin-fixed, paraffin-embedded tissue after heat-induced antigen retrieval. Antibody concentration 5 ug/ml. This image was taken for the unconjugated form of this product ...