

Datasheet for ABIN6736731
anti-IGF2BP1 antibody (AA 155-204)

2 Images

[Go to Product page](#)

Overview

Quantity:	100 µL
Target:	IGF2BP1
Binding Specificity:	AA 155-204
Reactivity:	Human, Rat, Rabbit, Dog, Pig, Monkey
Host:	Rabbit
Clonality:	Polyclonal
Conjugate:	This IGF2BP1 antibody is un-conjugated
Application:	Western Blotting (WB), Immunohistochemistry (IHC), Immunohistochemistry (Paraffin-embedded Sections) (IHC (p))

Product Details

Brand:	IHC-plus™
Immunogen:	<p>Synthetic peptide located between aa155-204 of human IGF2BP1 (Q9NZI8, NP_006537).</p> <p>Percent identity by BLAST analysis: Human, Chimpanzee, Gorilla, Gibbon, Monkey, Galago, Marmoset, Rat, Panda, Dog, Rabbit (100%), Mouse, Elephant, Bovine, Horse, Opossum, Guinea pig (92%), Turkey, Chicken (85%), Pig (83%).</p> <p>Type of Immunogen: Synthetic peptide</p>
Isotype:	IgG
Specificity:	Human IGF2BP1
Predicted Reactivity:	Percent identity by BLAST analysis: Human, Rat, Dog (100%) Bovine, Horse, Guinea pig (92%)

Product Details

Pig (83%).

Purification: Immunoaffinity purified

Target Details

Target: IGF2BP1

Alternative Name: CRD-BP / ZBP1 / IGF2BP1 ([IGF2BP1 Products](#))

Background: Name/Gene ID: IGF2BP1

Synonyms: IGF2BP1, CRD-BP, CRDBP, IMP1, IGF2 mRNA-binding protein 1, IMP-1, ZBP-1, Zip code-binding protein 1, Zipcode-binding protein 1, VICKZ family member 1, IGF-II mRNA-binding protein 1, VICKZ1

Gene ID: 10642

NCBI Accession: [NP_006537](#)

UniProt: [Q9NZI8](#)

Application Details

Application Notes: Approved: IHC, IHC-P (5 µg/mL), WB (0.2 - 1 µg/mL)

Usage: Immunohistochemistry: This antibody was validated for use in immunohistochemistry on a panel of 21 formalin-fixed, paraffin-embedded (FFPE) human tissues after heat induced antigen retrieval in pH 6.0 citrate buffer. After incubation with the primary antibody, slides were incubated with biotinylated secondary antibody, followed by alkaline phosphatase-streptavidin and chromogen. The stained slides were evaluated by a pathologist to confirm staining specificity. The optimal working concentration for this antibody was determined to be 5 µg/mL.

Comment: Target Species of Antibody: Human

Restrictions: For Research Use only

Handling

Format: Lyophilized

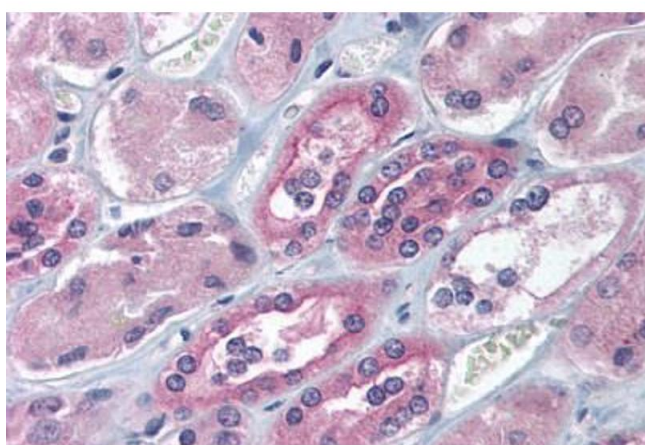
Reconstitution: Distilled water

Concentration: Lot specific

Handling

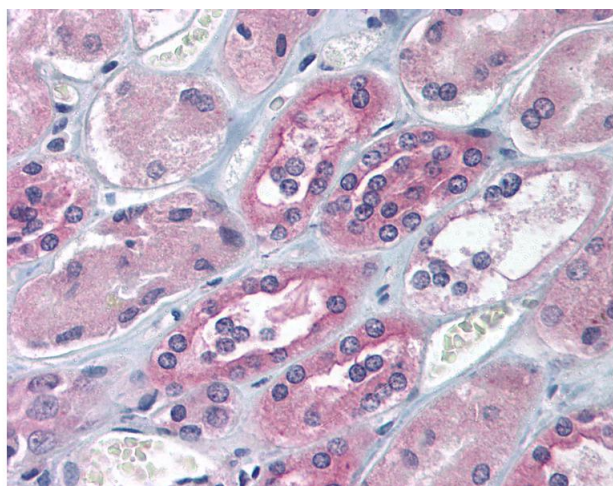
Buffer:	Lyophilized from PBS with 2 % sucrose
Handling Advice:	Avoid repeat freeze-thaw cycles.
Storage:	4 °C, -20 °C
Storage Comment:	Long term: -20°C, the use of 50% glycerol is recommended if storing aliquots in -20°C for long term use (up to 1 year) Short term (less than 1 week): 4°C. Avoid freeze-thaw cycles.

Images



Immunohistochemistry

Image 1. Human Kidney (formalin-fixed, paraffin-embedded) stained with IGF2BP1 antibody ABIN214118 at 5 ug/ml followed by biotinylated goat anti-rabbit IgG secondary antibody ABIN481713, alkaline phosphatase-streptavidin and chromogen.



Immunohistochemistry

Image 2. Anti-IGF2BP1 antibody IHC of human kidney. Immunohistochemistry of formalin-fixed, paraffin-embedded tissue after heat-induced antigen retrieval. Antibody concentration 5 ug/ml. This image was taken for the unconjugated form of this product. Other f ...