

Datasheet for ABIN6736732 anti-KIF21A antibody (AA 551-600)



[Go to Product page](#)

2 Images

Overview

| | |
|----------------------|--|
| Quantity: | 100 µL |
| Target: | KIF21A |
| Binding Specificity: | AA 551-600 |
| Reactivity: | Human, Mouse, Dog, Horse, Cow, Rat, Guinea Pig, Monkey |
| Host: | Rabbit |
| Clonality: | Polyclonal |
| Conjugate: | This KIF21A antibody is un-conjugated |
| Application: | Western Blotting (WB), Immunohistochemistry (IHC), Immunohistochemistry (Paraffin-embedded Sections) (IHC (p)) |

Product Details

| | |
|-----------------------|--|
| Brand: | IHC-plus™ |
| Immunogen: | Synthetic peptide located between aa551-600 of human KIF21A (Q7Z4S6, NP_060111). Percent identity by BLAST analysis: Human, Gorilla, Gibbon, Monkey, Galago, Marmoset, Dog, Bovine (100%), Elephant, Bat, Rabbit, Pig (92%), Mouse, Horse, Opossum (85%), Rat (78%). Type of Immunogen: Synthetic peptide |
| Isotype: | IgG |
| Specificity: | Human KIF21A |
| Predicted Reactivity: | Percent identity by BLAST analysis: Human, Dog, Bovine (100%) Rabbit, Pig (92%) Mouse, Horse (85%). |

Product Details

Purification: Immunoaffinity purified

Target Details

Target: KIF21A

Alternative Name: KIF21A ([KIF21A Products](#))

Background: Name/Gene ID: KIF21A

Synonyms: KIF21A, CFEOM3B, FEOM3A, FEOM1, KIAA1708, Kinesin family member 21A, Kinesin-like protein KIF2, Kinesin-like protein KIF21A, KIF2, CFEOM1

Gene ID: 55605

NCBI Accession: [NP_060111](#)

UniProt: [Q7Z4S6](#)

Pathways: [M Phase](#)

Application Details

Application Notes: Approved: IHC, IHC-P (5 µg/mL), WB (0.2 - 1 µg/mL)

Usage: Immunohistochemistry: This antibody was validated for use in immunohistochemistry on a panel of 21 formalin-fixed, paraffin-embedded (FFPE) human tissues after heat induced antigen retrieval in pH 6.0 citrate buffer. After incubation with the primary antibody, slides were incubated with biotinylated secondary antibody, followed by alkaline phosphatase-streptavidin and chromogen. The stained slides were evaluated by a pathologist to confirm staining specificity. The optimal working concentration for this antibody was determined to be 5 µg/mL.

Comment: Target Species of Antibody: Human

Restrictions: For Research Use only

Handling

Format: Lyophilized

Reconstitution: After adding water, will consist of PBS buffer with 2 % sucrose

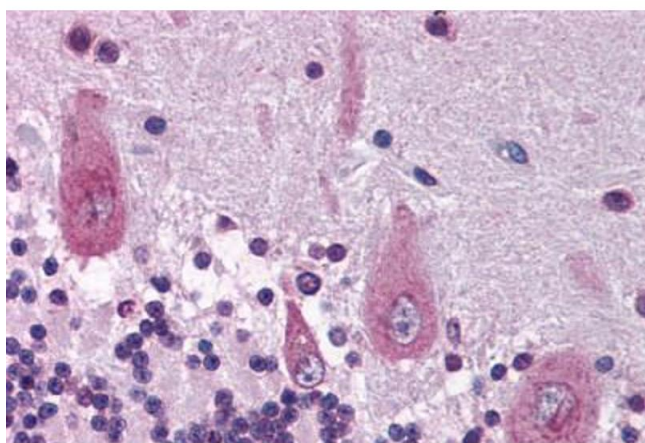
Concentration: Lot specific

Buffer: Lyophilized from PBS with 2 % sucrose

Handling

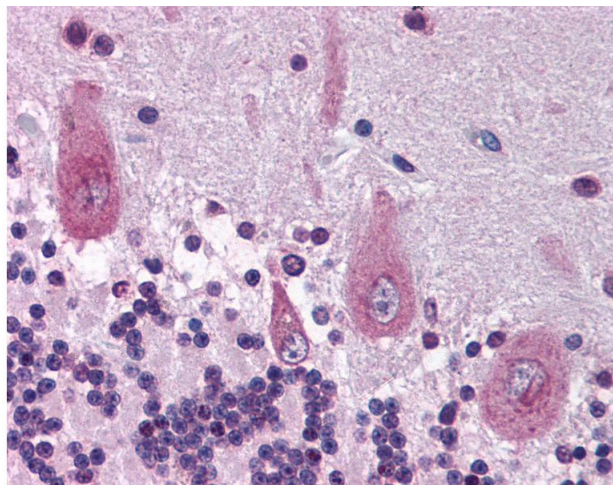
| | |
|------------------|---|
| Handling Advice: | Avoid repeat freeze-thaw cycles. |
| Storage: | 4 °C,-20 °C |
| Storage Comment: | Long term: -20°C, the use of 50% glycerol is recommended if storing aliquots in -20°C for long term use (up to 1 year) Short term (less than 1 week): 4°C. Avoid freeze-thaw cycles. |

Images



Immunohistochemistry

Image 1. Human Brain, Cerebellum (formalin-fixed, paraffin-embedded) stained with KIF21A antibody ABIN214120 at 5 ug/ml followed by biotinylated goat anti-rabbit IgG secondary antibody ABIN481713, alkaline phosphatase-streptavidin and chromogen.



Immunohistochemistry

Image 2. Anti-KIF21A antibody IHC of human brain, cerebellum. Immunohistochemistry of formalin-fixed, paraffin-embedded tissue after heat-induced antigen retrieval. Antibody concentration 5 ug/ml. This image was taken for the unconjugated form of this product ...