

Datasheet for ABIN6736733
anti-KIF23 antibody (AA 32-81)[Go to Product page](#)

2 Images

Overview

Quantity:	100 µL
Target:	KIF23
Binding Specificity:	AA 32-81
Reactivity:	Human, Mouse, Rat, Horse, Rabbit, Dog, Pig, Hamster, Monkey
Host:	Rabbit
Clonality:	Polyclonal
Conjugate:	This KIF23 antibody is un-conjugated
Application:	Western Blotting (WB), Immunohistochemistry (IHC), Immunohistochemistry (Paraffin-embedded Sections) (IHC (p))

Product Details

Brand:	IHC-plus™
Immunogen:	Synthetic peptide located between aa32-81 of human KIF23 (Q02241, NP_004847). Percent identity by BLAST analysis: Human, Chimpanzee, Gorilla, Gibbon, Monkey, Galago, Marmoset, Mouse, Rat, Hamster, Elephant, Dog, Rabbit, Horse, Pig (100%), Bovine, Opossum (92%), Platypus (85%). Type of Immunogen: Synthetic peptide
Isotype:	IgG
Specificity:	Human KIF23 / MKLP1
Predicted Reactivity:	Percent identity by BLAST analysis: Human, Mouse, Rat, Dog, Rabbit, Horse, Pig (100%) Bovine

Product Details

(92%).

Purification: Immunoaffinity purified

Target Details

Target: KIF23

Alternative Name: KIF23 / MKLP1 ([KIF23 Products](#))

Background: Name/Gene ID: KIF23

Synonyms: KIF23, Kinesin family member 23, Kinesin-like protein KIF23, Mitotic kinesin-like 1, MKLP1, MKLP-1, Kinesin-like protein 5, KNSL5, CHO1, Mitotic kinesin-like protein 1

Gene ID: 9493

NCBI Accession: [NP_004847](#)

UniProt: [Q02241](#)

Application Details

Application Notes: Approved: IHC, IHC-P (5 µg/mL), WB (0.2 - 1 µg/mL)

Usage: Immunohistochemistry: This antibody was validated for use in immunohistochemistry on a panel of 21 formalin-fixed, paraffin-embedded (FFPE) human tissues after heat induced antigen retrieval in pH 6.0 citrate buffer. After incubation with the primary antibody, slides were incubated with biotinylated secondary antibody, followed by alkaline phosphatase-streptavidin and chromogen. The stained slides were evaluated by a pathologist to confirm staining specificity. The optimal working concentration for this antibody was determined to be 5 µg/mL.

Comment: Target Species of Antibody: Human

Restrictions: For Research Use only

Handling

Format: Lyophilized

Reconstitution: Distilled Water.

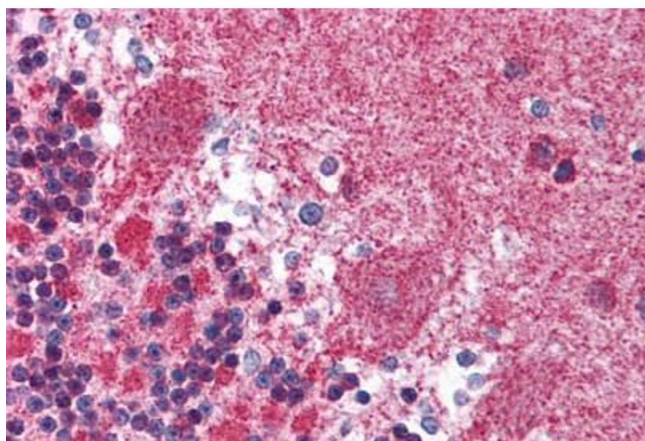
Concentration: Lot specific

Buffer: Lyophilized from PBS with 2 % sucrose

Handling

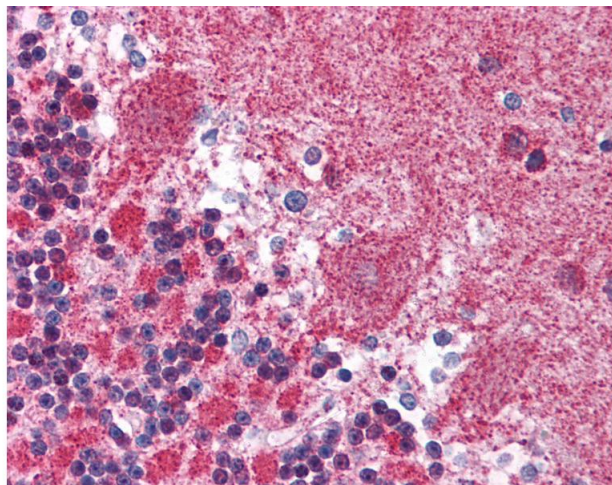
Handling Advice:	Avoid repeat freeze-thaw cycles.
Storage:	4 °C, -20 °C
Storage Comment:	Long term: -20°C, the use of 50% glycerol is recommended if storing aliquots in -20°C for long term use (up to 1 year) Short term (less than 1 week): 4°C. Avoid freeze-thaw cycles.

Images



Immunohistochemistry (Paraffin-embedded Sections)

Image 1. Human Brain, Cerebellum (formalin-fixed, paraffin-embedded) stained with KIF23 antibody ABIN214121 at 5 ug/ml followed by biotinylated goat anti-rabbit IgG secondary antibody ABIN481713, alkaline phosphatase-streptavidin and chromogen.



Immunohistochemistry

Image 2. Anti-KIF23 / MKLP1 antibody IHC of human brain, cerebellum. Immunohistochemistry of formalin-fixed, paraffin-embedded tissue after heat-induced antigen retrieval. Antibody concentration 5 ug/ml. This image was taken for the unconjugated form of this ...