

## Datasheet for ABIN6736734 anti-KLF6 antibody (AA 155-204)



[Go to Product page](#)

### 2 Images

#### Overview

Quantity:	100 µL
Target:	KLF6
Binding Specificity:	AA 155-204
Reactivity:	Human, Rat, Dog, Horse, Pig
Host:	Rabbit
Clonality:	Polyclonal
Conjugate:	This KLF6 antibody is un-conjugated
Application:	Western Blotting (WB), Immunohistochemistry (IHC), Immunohistochemistry (Paraffin-embedded Sections) (IHC (p))

#### Product Details

Brand:	IHC-plus™
Immunogen:	Synthetic peptide located between aa155-204 of human KLF6 (Q99612, NP_001291). Percent identity by BLAST analysis: Human, Chimpanzee, Gorilla (100%), Gibbon, Monkey, Galago, Marmoset, Mouse, Rabbit (92%), Bat (86%), Rat, Hamster, Elephant, Dog, Horse, Pig, Guinea pig (85%).  Type of Immunogen: Synthetic peptide
Isotype:	IgG
Specificity:	Human KLF6
Predicted Reactivity:	Percent identity by BLAST analysis: Human (100%) Mouse (92%) Rat, Dog, Horse, Pig (85%).

## Product Details

Purification: Immunoaffinity purified

## Target Details

Target: KLF6

Alternative Name: KLF6 / PAC1 ([KLF6 Products](#))

Background: Name/Gene ID: KLF6

Synonyms: KLF6, B-cell-derived protein 1, CBA1, COPEB, GC-rich binding factor, Krueppel-like factor 6, Kruppel-like factor 6, PAC1, ST12, ZF9, Protooncogene B-cell derived 1, BCD1, CPBP, GBF, Proto-oncogene BCD1, Transcription factor Zf9

Gene ID: 1316

NCBI Accession: [NP\\_001291](#)

UniProt: [Q99612](#)

## Application Details

Application Notes: Approved: IHC, IHC-P (5 µg/mL), WB (0.2 - 1 µg/mL)

Usage: Immunohistochemistry: This antibody was validated for use in immunohistochemistry on a panel of 21 formalin-fixed, paraffin-embedded (FFPE) human tissues after heat induced antigen retrieval in pH 6.0 citrate buffer. After incubation with the primary antibody, slides were incubated with biotinylated secondary antibody, followed by alkaline phosphatase-streptavidin and chromogen. The stained slides were evaluated by a pathologist to confirm staining specificity. The optimal working concentration for this antibody was determined to be 5 µg/mL.

Comment: Target Species of Antibody: Human

Restrictions: For Research Use only

## Handling

Format: Lyophilized

Reconstitution: After adding water, will consist of PBS buffer with 2 % sucrose

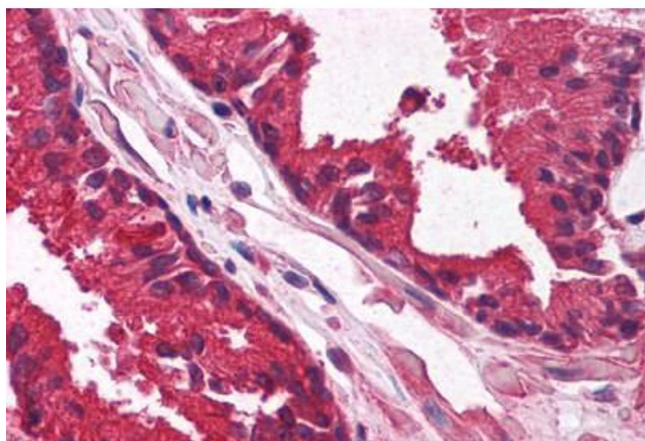
Concentration: Lot specific

Buffer: Lyophilized from PBS with 2 % sucrose

## Handling

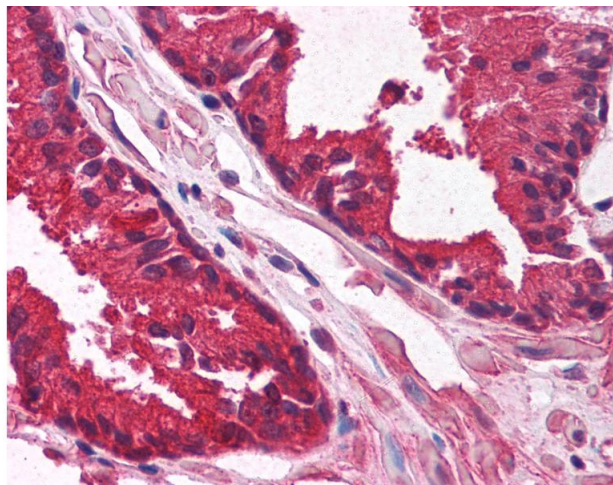
Handling Advice:	Avoid repeat freeze-thaw cycles.
Storage:	4 °C,-20 °C
Storage Comment:	Long term: -20°C, the use of 50% glycerol is recommended if storing aliquots in -20°C for long term use (up to 1 year) Short term (less than 1 week): 4°C. Avoid freeze-thaw cycles.

## Images



### Immunohistochemistry (Paraffin-embedded Sections)

**Image 1.** Human Prostate (formalin-fixed, paraffin-embedded) stained with KLF6 antibody ABIN214122 at 5 ug/ml followed by biotinylated goat anti-rabbit IgG secondary antibody ABIN481713, alkaline phosphatase-streptavidin and chromogen.



### Immunohistochemistry

**Image 2.** Anti-KLF6 antibody IHC of human prostate. Immunohistochemistry of formalin-fixed, paraffin-embedded tissue after heat-induced antigen retrieval. Antibody concentration 5 ug/ml. This image was taken for the unconjugated form of this product. Other fo ...