

Datasheet for ABIN6736739
anti-NFIA antibody (AA 348-397)

3 Images

[Go to Product page](#)

Overview

Quantity:	100 µL
Target:	NFIA
Binding Specificity:	AA 348-397
Reactivity:	Human, Mouse, Rat, Cow, Horse, Rabbit, Guinea Pig, Pig, Chicken, Monkey, Xenopus laevis
Host:	Rabbit
Clonality:	Polyclonal
Conjugate:	This NFIA antibody is un-conjugated
Application:	Western Blotting (WB), Immunohistochemistry (IHC), Immunohistochemistry (Paraffin-embedded Sections) (IHC (p))

Product Details

Brand:	IHC-plus™
Immunogen:	Synthetic peptide located between aa348-397 of human NFIA (Q8TA97, NP_005586). Percent identity by BLAST analysis: Human, Chimpanzee, Gorilla, Orangutan, Gibbon, Monkey, Galago, Marmoset, Mouse, Rat, Bovine, Rabbit, Horse, Pig, Opossum, Guinea pig, Turkey, Zebra finch, Chicken, Platypus, Xenopus (100%), Zebrafish (92%). Type of Immunogen: Synthetic peptide
Isotype:	IgG
Specificity:	Human NFIA
Predicted Reactivity:	Percent identity by BLAST analysis: Human, Mouse, Rat, Bovine, Rabbit, Horse, Guinea pig,

Product Details

Chicken (100%) Zebrafish (92%).

Purification: Immunoaffinity purified

Target Details

Target: NFIA

Alternative Name: NFIA / Nuclear Factor 1 ([NFIA Products](#))

Background: Name/Gene ID: NFIA

Synonyms: NFIA, CTF, NF1-A, NF-I/A, NFI-L, Nuclear Factor 1, TGGCA-binding protein, NFI-A, Nuclear factor 1 A-type, KIAA1439, Nuclear factor 1/A, Nuclear factor I/A

Gene ID: 4774

NCBI Accession: [NP_005586](#)

UniProt: [Q12857](#)

Application Details

Application Notes: Approved: IHC, IHC-P (5 µg/mL), WB (0.2 - 1 µg/mL)

Usage: Immunohistochemistry: This antibody was validated for use in immunohistochemistry on a panel of 21 formalin-fixed, paraffin-embedded (FFPE) human tissues after heat induced antigen retrieval in pH 6.0 citrate buffer. After incubation with the primary antibody, slides were incubated with biotinylated secondary antibody, followed by alkaline phosphatase-streptavidin and chromogen. The stained slides were evaluated by a pathologist to confirm staining specificity. The optimal working concentration for this antibody was determined to be 5 µg/mL.

Comment: Target Species of Antibody: Human

Restrictions: For Research Use only

Handling

Format: Lyophilized

Reconstitution: After adding water, will consist of PBS buffer with 2 % sucrose

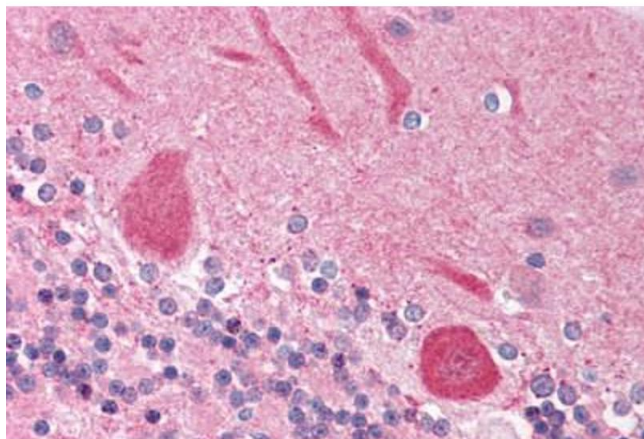
Concentration: Lot specific

Buffer: Lyophilized from PBS with 2 % sucrose

Handling

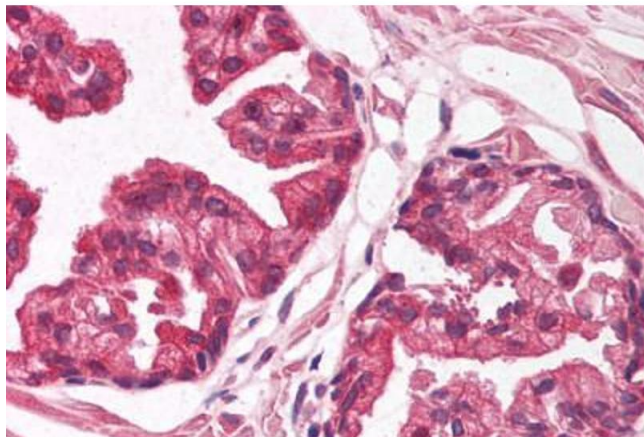
Handling Advice:	Avoid repeat freeze-thaw cycles.
Storage:	4 °C, -20 °C
Storage Comment:	Long term: -20°C, the use of 50% glycerol is recommended if storing aliquots in -20°C for long term use (up to 1 year) Short term (less than 1 week): 4°C. Avoid freeze-thaw cycles.

Images



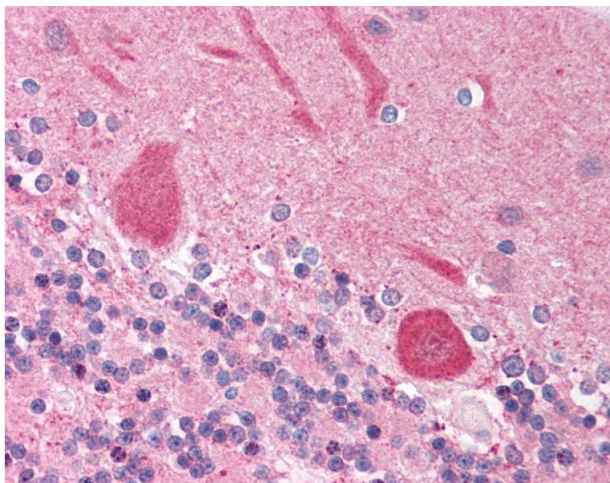
Immunohistochemistry

Image 1. Human Brain, Cerebellum (formalin-fixed, paraffin-embedded) stained with NFIA antibody ABIN214127 at 5 ug/ml followed by biotinylated goat anti-rabbit IgG secondary antibody ABIN481713, alkaline phosphatase-streptavidin and chromogen.



Immunohistochemistry

Image 2. Human Prostate (formalin-fixed, paraffin-embedded) stained with NFIA antibody ABIN214127 at 5 ug/ml followed by biotinylated goat anti-rabbit IgG secondary antibody ABIN481713, alkaline phosphatase-streptavidin and chromogen.



Immunohistochemistry

Image 3. Anti-NFIA antibody IHC of human brain, cerebellum. Immunohistochemistry of formalin-fixed, paraffin-embedded tissue after heat-induced antigen retrieval. Antibody concentration 5 ug/ml. This image was taken for the unconjugated form of this product. ...