



[Go to Product page](#)

Datasheet for ABIN6736745
anti-PCK1 antibody (AA 330-379)

3 Images

Overview

Quantity:	100 µL
Target:	PCK1
Binding Specificity:	AA 330-379
Reactivity:	Human, Mouse, Rat, Cow, Rabbit, Horse, Monkey, Chicken, Hamster
Host:	Rabbit
Clonality:	Polyclonal
Conjugate:	This PCK1 antibody is un-conjugated
Application:	Western Blotting (WB), Immunohistochemistry (IHC), Immunohistochemistry (Paraffin-embedded Sections) (IHC (p))

Product Details

Brand:	IHC-plus™
Immunogen:	Synthetic peptide located between aa330-379 of human PCK1 (P35558, NP_002582). Percent identity by BLAST analysis: Human, Chimpanzee, Gorilla, Orangutan, Gibbon, Monkey, Galago, Marmoset, Mouse, Rat, Hamster, Elephant, Bovine, Rabbit, Horse, Opossum, Turkey, Zebra finch, Chicken (100%), Bat, Pig, Platypus, Stickleback (92%), Salmon (91%), Dog, Guinea pig, Xenopus (85%). Type of Immunogen: Synthetic peptide
Isotype:	IgG
Specificity:	Human PCK1

Product Details

Predicted Reactivity: Percent identity by BLAST analysis: Human, Mouse, Bovine, Rabbit, Chicken (100%) Pig (92%) Xenopus (85%).

Purification: Immunoaffinity purified

Target Details

Target: PCK1

Alternative Name: PCK1 ([PCK1 Products](#))

Background: Name/Gene ID: PCK1

Synonyms: PCK1, PEPCKC, Phosphopyruvate carboxylase, PEP carboxykinase, PEPCK-C, PEPCK1

Gene ID: 5105

NCBI Accession: [NP_002582](#)

UniProt: [P35558](#)

Pathways: [Positive Regulation of Peptide Hormone Secretion](#), [Carbohydrate Homeostasis](#)

Application Details

Application Notes: Approved: IHC, IHC-P (5 µg/mL), WB (0.2 - 1 µg/mL)

Usage: Immunohistochemistry: This antibody was validated for use in immunohistochemistry on a panel of 21 formalin-fixed, paraffin-embedded (FFPE) human tissues after heat induced antigen retrieval in pH 6.0 citrate buffer. After incubation with the primary antibody, slides were incubated with biotinylated secondary antibody, followed by alkaline phosphatase-streptavidin and chromogen. The stained slides were evaluated by a pathologist to confirm staining specificity. The optimal working concentration for this antibody was determined to be 5 µg/mL.

Comment: Target Species of Antibody: Human

Restrictions: For Research Use only

Handling

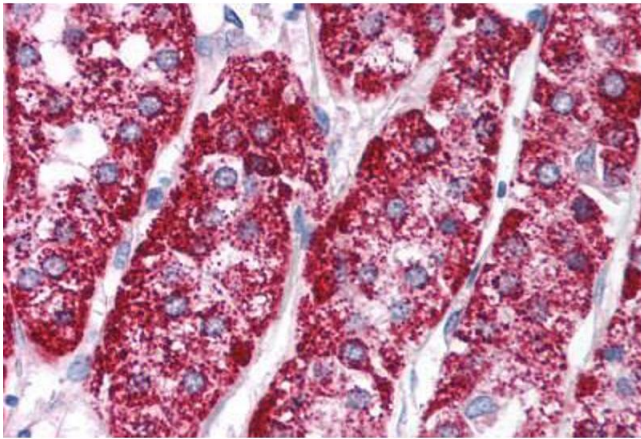
Format: Lyophilized

Reconstitution: Reconstitute with 50 µL sterile ddH₂O.

Handling

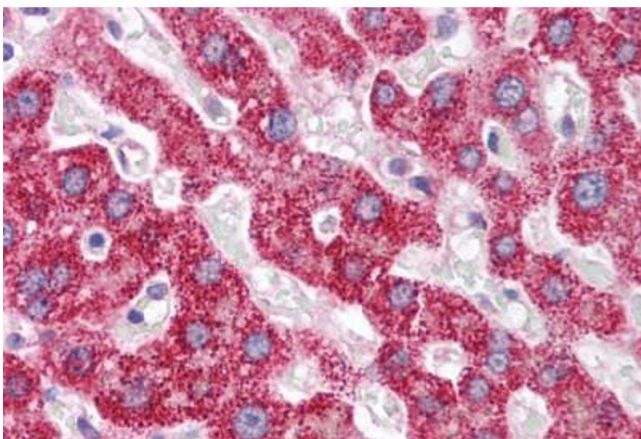
Concentration:	Lot specific
Buffer:	Lyophilized from PBS with 2 % sucrose
Handling Advice:	Avoid repeat freeze-thaw cycles.
Storage:	4 °C,-20 °C
Storage Comment:	Long term: -20°C, the use of 50% glycerol is recommended if storing aliquots in -20°C for long term use (up to 1 year) Short term (less than 1 week): 4°C. Avoid freeze-thaw cycles.

Images



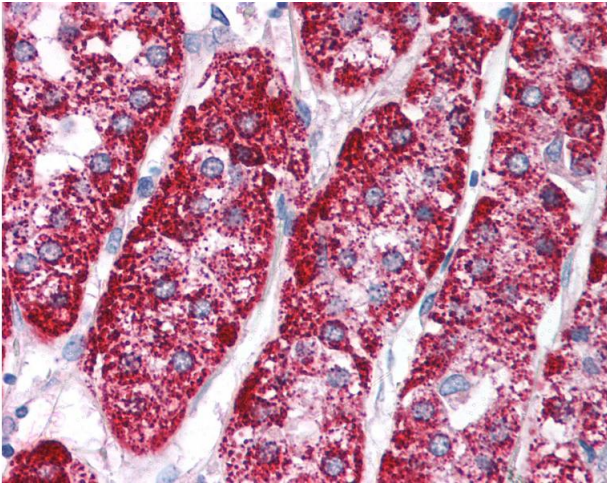
Immunohistochemistry (Paraffin-embedded Sections)

Image 1. Human Adrenal (formalin-fixed, paraffin-embedded) stained with PCK1 antibody ABIN214134 at 5 ug/ml followed by biotinylated goat anti-rabbit IgG secondary antibody ABIN481713, alkaline phosphatase-streptavidin and chromogen.



Immunohistochemistry (Paraffin-embedded Sections)

Image 2. Human Liver (formalin-fixed, paraffin-embedded) stained with PCK1 antibody ABIN214134 at 5 ug/ml followed by biotinylated goat anti-rabbit IgG secondary antibody ABIN481713, alkaline phosphatase-streptavidin and chromogen.



Immunohistochemistry

Image 3. Anti-PCK1 antibody IHC of human adrenal. Immunohistochemistry of formalin-fixed, paraffin-embedded tissue after heat-induced antigen retrieval. Antibody concentration 5 ug/ml. This image was taken for the unconjugated form of this product. Other for ...