



[Go to Product page](#)

Datasheet for ABIN6736746
anti-PEG3 antibody (C-Term)

2 Images

Overview

Quantity:	100 µL
Target:	PEG3
Binding Specificity:	C-Term
Reactivity:	Human, Rat, Cow, Dog, Horse, Pig, Bat, Monkey
Host:	Rabbit
Clonality:	Polyclonal
Conjugate:	This PEG3 antibody is un-conjugated
Application:	Western Blotting (WB), Immunohistochemistry (IHC), Immunohistochemistry (Paraffin-embedded Sections) (IHC (p))

Product Details

Brand:	IHC-plus™
Immunogen:	Synthetic peptide from C-Terminus of human PEG3 (Q9GZU2, NP_006201). Percent identity by BLAST analysis: Human, Chimpanzee, Gorilla, Orangutan, Gibbon, Monkey, Galago, Marmoset, Rat, Panda, Dog, Bovine, Bat, Horse, Pig (100%), Mouse, Hamster, Elephant (92%). Type of Immunogen: Synthetic peptide
Isotype:	IgG
Specificity:	Human PEG3
Predicted Reactivity:	Percent identity by BLAST analysis: Human, Bovine, Pig (100%) Mouse (92%).
Purification:	Immunoaffinity purified

Target Details

Target:	PEG3
Alternative Name:	PEG3 (PEG3 Products)
Background:	Name/Gene ID: PEG3 Synonyms: PEG3, KIAA0287, Paternally expressed 3, PW1, ZNF904, ZKSCAN22, ZSCAN24
Gene ID:	5178
NCBI Accession:	NP_006201
UniProt:	Q9GZU2

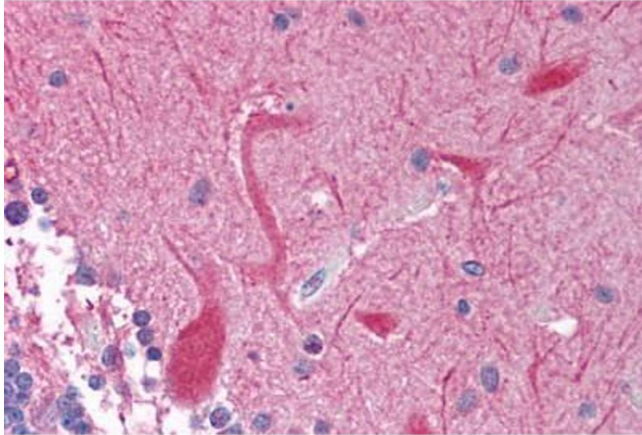
Application Details

Application Notes:	Approved: IHC, IHC-P (5 µg/mL), WB (0.2 - 1 µg/mL) Usage: Immunohistochemistry: This antibody was validated for use in immunohistochemistry on a panel of 21 formalin-fixed, paraffin-embedded (FFPE) human tissues after heat induced antigen retrieval in pH 6.0 citrate buffer. After incubation with the primary antibody, slides were incubated with biotinylated secondary antibody, followed by alkaline phosphatase-streptavidin and chromogen. The stained slides were evaluated by a pathologist to confirm staining specificity. The optimal working concentration for this antibody was determined to be 5 µg/mL.
Comment:	Target Species of Antibody: Human
Restrictions:	For Research Use only

Handling

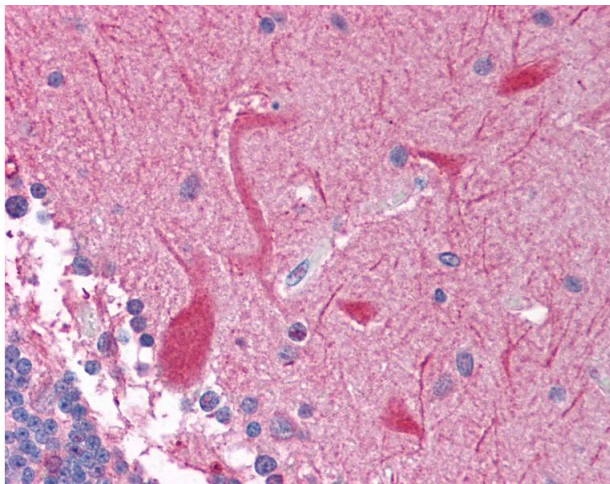
Format:	Lyophilized
Reconstitution:	Distilled water
Concentration:	Lot specific
Buffer:	Lyophilized from PBS with 2 % sucrose
Handling Advice:	Avoid repeat freeze-thaw cycles.
Storage:	4 °C, -20 °C
Storage Comment:	Long term: -20°C, the use of 50% glycerol is recommended if storing aliquots in -20°C for long term use (up to 1 year)

Short term (less than 1 week): 4°C. Avoid freeze-thaw cycles.



Immunohistochemistry (Paraffin-embedded Sections)

Image 1. Human Brain, Cerebellum (formalin-fixed, paraffin-embedded) stained with PEG3 antibody ABIN214135 at 5 ug/ml followed by biotinylated goat anti-rabbit IgG secondary antibody ABIN481713, alkaline phosphatase-streptavidin and chromogen.



Immunohistochemistry

Image 2. Anti-PEG3 antibody IHC of human brain, cerebellum. Immunohistochemistry of formalin-fixed, paraffin-embedded tissue after heat-induced antigen retrieval. Antibody concentration 5 ug/ml. This image was taken for the unconjugated form of this product. ...