

Datasheet for ABIN6736747  
**anti-POLR2B antibody (AA 805-854)**

## 3 Images

[Go to Product page](#)

## Overview

Quantity:	100 µL
Target:	POLR2B
Binding Specificity:	AA 805-854
Reactivity:	Human, Mouse, Rat, Dog, Cow, Rabbit, Guinea Pig, Horse, Pig, Xenopus laevis, Monkey
Host:	Rabbit
Clonality:	Polyclonal
Conjugate:	This POLR2B antibody is un-conjugated
Application:	Western Blotting (WB), Immunohistochemistry (IHC), Immunohistochemistry (Paraffin-embedded Sections) (IHC (p))

## Product Details

Brand:	IHC-plus™
Immunogen:	<p>Synthetic peptide located between aa805-854 of human POLR2B (P30876, NP_000929).</p> <p>Percent identity by BLAST analysis: Human, Chimpanzee, Gorilla, Gibbon, Monkey, Galago, Marmoset, Mouse, Rat, Dog, Bovine, Rabbit, Horse, Pig, Opossum, Guinea pig, Platypus, Xenopus (100%), Zebra finch, Chicken, Salmon, Stickleback, Zebrafish (92%).</p> <p>Type of Immunogen: Synthetic peptide</p>
Isotype:	IgG
Specificity:	Human POLR2B / RPB2
Predicted Reactivity:	Percent identity by BLAST analysis: Human, Rat, Dog, Bovine, Xenopus (100%) Chicken,

## Product Details

Zebrafish (92%).

Purification: Immunoaffinity purified

## Target Details

Target: POLR2B

Alternative Name: POLR2B / RPB2 ([POLR2B Products](#))

Background: Name/Gene ID: POLR2B

Synonyms: POLR2B, HsRPB2, POL2RB, RNA polymerase II subunit B2, RNA polymerase II subunit 2, RPB2, HRPB140

Gene ID: 5431

NCBI Accession: [NP\\_000929](#)

UniProt: [P30876](#)

Pathways: [Regulatory RNA Pathways](#), [DNA Damage Repair](#)

## Application Details

Application Notes: Approved: IHC, IHC-P (5 µg/mL), WB (0.2 - 1 µg/mL)

Usage: Immunohistochemistry: This antibody was validated for use in immunohistochemistry on a panel of 21 formalin-fixed, paraffin-embedded (FFPE) human tissues after heat induced antigen retrieval in pH 6.0 citrate buffer. After incubation with the primary antibody, slides were incubated with biotinylated secondary antibody, followed by alkaline phosphatase-streptavidin and chromogen. The stained slides were evaluated by a pathologist to confirm staining specificity. The optimal working concentration for this antibody was determined to be 5 µg/mL.

Comment: Target Species of Antibody: Human

Restrictions: For Research Use only

## Handling

Format: Lyophilized

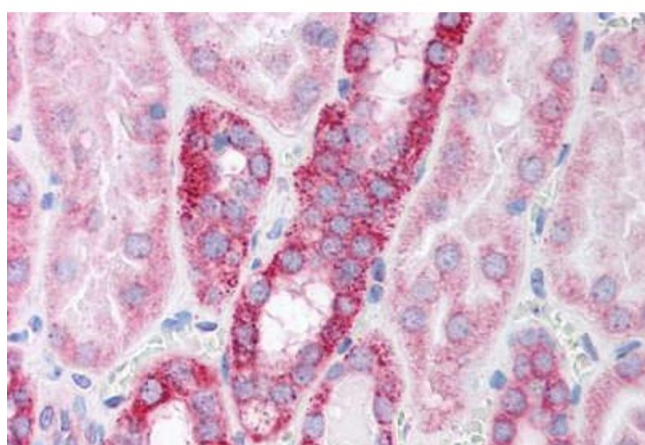
Reconstitution: After adding water, will consist of PBS buffer with 2 % sucrose

Concentration: Lot specific

## Handling

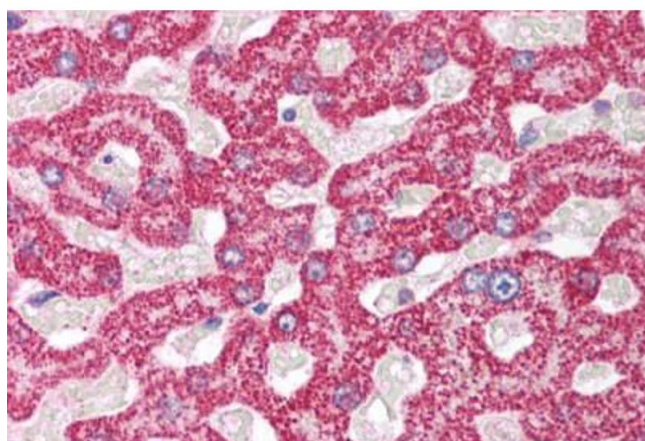
Buffer:	Lyophilized from PBS with 2 % sucrose
Handling Advice:	Avoid repeat freeze-thaw cycles.
Storage:	4 °C, -20 °C
Storage Comment:	Long term: -20°C, the use of 50% glycerol is recommended if storing aliquots in -20°C for long term use (up to 1 year) Short term (less than 1 week): 4°C. Avoid freeze-thaw cycles.

## Images



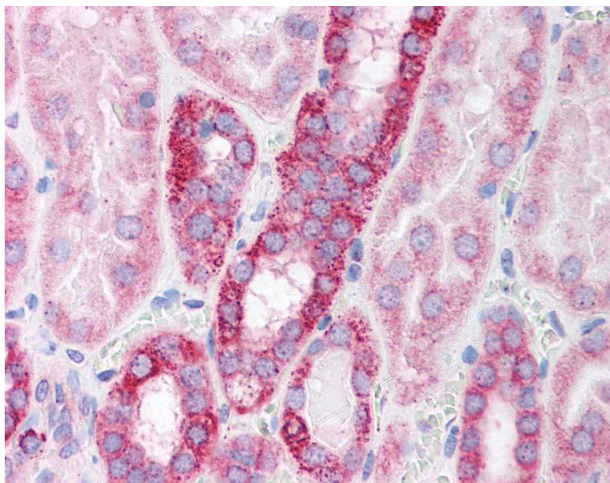
### Immunohistochemistry (Paraffin-embedded Sections)

**Image 1.** Human Kidney (formalin-fixed, paraffin-embedded) stained with POLR2B antibody ABIN214136 at 5 ug/ml followed by biotinylated goat anti-rabbit IgG secondary antibody ABIN481713, alkaline phosphatase-streptavidin and chromogen.



### Immunohistochemistry

**Image 2.** Human Liver (formalin-fixed, paraffin-embedded) stained with POLR2B antibody ABIN214136 at 5 ug/ml followed by biotinylated goat anti-rabbit IgG secondary antibody ABIN481713, alkaline phosphatase-streptavidin and chromogen.



#### Immunohistochemistry

**Image 3.** Anti-POLR2B / RPB2 antibody IHC of human kidney. Immunohistochemistry of formalin-fixed, paraffin-embedded tissue after heat-induced antigen retrieval. Antibody concentration 5 ug/ml. This image was taken for the unconjugated form of this product. O ...