

Datasheet for ABIN6736748  
**anti-PSMA1 antibody (AA 170-219)**

## 2 Images

[Go to Product page](#)

## Overview

Quantity:	100 µL
Target:	PSMA1
Binding Specificity:	AA 170-219
Reactivity:	Human, Mouse, Rat, Dog, Zebrafish (Danio rerio), Rabbit, Cow, Guinea Pig, Horse, Pig, Xenopus laevis, Chicken, Hamster, Monkey, Bat
Host:	Rabbit
Clonality:	Polyclonal
Conjugate:	This PSMA1 antibody is un-conjugated
Application:	Western Blotting (WB), Immunohistochemistry (IHC), Immunohistochemistry (Paraffin-embedded Sections) (IHC (p))

## Product Details

Brand:	IHC-plus™
Immunogen:	Synthetic peptide located between aa170-219 of human PSMA1 (P25786, NP_002777). Percent identity by BLAST analysis: Human, Chimpanzee, Gorilla, Orangutan, Gibbon, Monkey, Marmoset, Mouse, Rat, Hamster, Elephant, Dog, Bovine, Bat, Rabbit, Horse, Pig, Opossum, Guinea pig, Turkey, Chicken, Platypus, Xenopus, Trout, Catfish, Salmon, Smelt, Stickleback, Pike, Zebrafish (100%).  Type of Immunogen: Synthetic peptide
Isotype:	IgG

## Product Details

Specificity:	Human PSMA1
Predicted Reactivity:	Percent identity by BLAST analysis: Human, Mouse, Dog, Horse, Chicken, Xenopus, Zebrafish (100%).
Purification:	Immunoaffinity purified

## Target Details

Target:	PSMA1
Alternative Name:	PSMA1 ( <a href="#">PSMA1 Products</a> )
Background:	<p>Name/Gene ID: PSMA1</p> <p>Subfamily: Threonine T1</p> <p>Family: Protease Non Catalytic</p> <p>Synonyms: PSMA1, 30 kDa prosomal protein, HC2, Macropain subunit C2, NU, PSC2, PROS30, Proteasome nu chain, Proteasome subunit alpha 1, Proteasome subunit nu, Protein P30-33K, Macropain subunit nu, PROS-30, Proteasome component C2</p>
Gene ID:	5682
NCBI Accession:	<a href="#">NP_002777</a>
UniProt:	<a href="#">P25786</a>
Pathways:	<a href="#">Mitotic G1-G1/S Phases</a> , <a href="#">DNA Replication</a> , <a href="#">Synthesis of DNA</a>

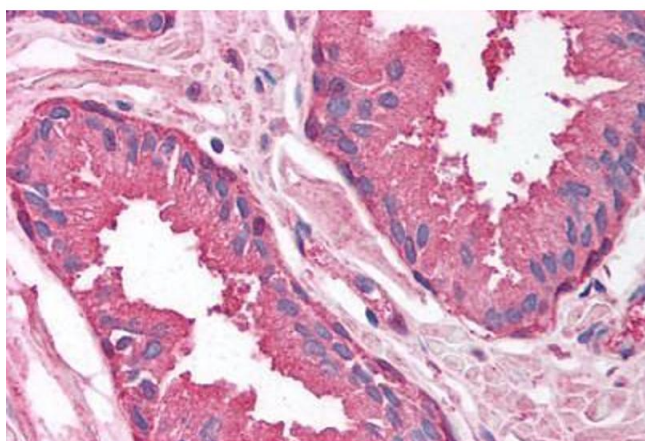
## Application Details

Application Notes:	<p>Approved: IHC, IHC-P (5 µg/mL), WB (0.2 - 1 µg/mL)</p> <p>Usage: Immunohistochemistry: This antibody was validated for use in immunohistochemistry on a panel of 21 formalin-fixed, paraffin-embedded (FFPE) human tissues after heat induced antigen retrieval in pH 6.0 citrate buffer. After incubation with the primary antibody, slides were incubated with biotinylated secondary antibody, followed by alkaline phosphatase-streptavidin and chromogen. The stained slides were evaluated by a pathologist to confirm staining specificity. The optimal working concentration for this antibody was determined to be 5 µg/mL.</p>
Comment:	Target Species of Antibody: Human
Restrictions:	For Research Use only

## Handling

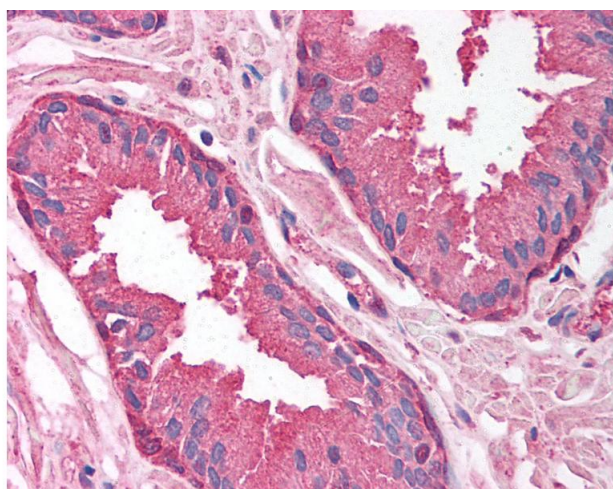
Format:	Lyophilized
Reconstitution:	After adding water, will consist of PBS buffer with 2 % sucrose
Concentration:	Lot specific
Buffer:	Lyophilized from PBS with 2 % sucrose
Handling Advice:	Avoid repeat freeze-thaw cycles.
Storage:	4 °C,-20 °C
Storage Comment:	Long term: -20°C, the use of 50% glycerol is recommended if storing aliquots in -20°C for long term use (up to 1 year) Short term (less than 1 week): 4°C. Avoid freeze-thaw cycles.

## Images



### Immunohistochemistry (Paraffin-embedded Sections)

**Image 1.** Human Prostate (formalin-fixed, paraffin-embedded) stained with PSMA1 antibody ABIN214137 at 5 ug/ml followed by biotinylated goat anti-rabbit IgG secondary antibody ABIN481713, alkaline phosphatase-streptavidin and chromogen.



### Immunohistochemistry

**Image 2.** Anti-PSMA1 antibody IHC of human prostate. Immunohistochemistry of formalin-fixed, paraffin-embedded tissue after heat-induced antigen retrieval. Antibody concentration 5 ug/ml. This image was taken for the unconjugated form of this product. Other f ...