

Datasheet for ABIN6736750
anti-Recoverin antibody (AA 131-180)[Go to Product page](#)

2 Images

Overview

Quantity:	100 µL
Target:	Recoverin (RCVRN)
Binding Specificity:	AA 131-180
Reactivity:	Human, Rat, Cow, Dog
Host:	Rabbit
Clonality:	Polyclonal
Conjugate:	This Recoverin antibody is un-conjugated
Application:	Western Blotting (WB), Immunohistochemistry (IHC), Immunohistochemistry (Paraffin-embedded Sections) (IHC (p))

Product Details

Brand:	IHC-plus™
Immunogen:	Synthetic peptide located between aa131-180 of human RCVRN (Q53XL0, NP_002894). Percent identity by BLAST analysis: Human, Chimpanzee, Gorilla, Gibbon, Marmoset (100%), Monkey (92%), Bovine, Horse, Pig, Frog (85%), Rat (84%). Type of Immunogen: Synthetic peptide
Isotype:	IgG
Specificity:	Human RCVRN / Recoverin
Predicted Reactivity:	Percent identity by BLAST analysis: Human (100%) Bovine, Frog (85%) Rat (84%).
Purification:	Immunoaffinity purified

Target Details

Target:	Recoverin (RCVRN)
Alternative Name:	Recoverin (RCVRN Products)
Background:	Name/Gene ID: RCVRN Synonyms: RCVRN, Recoverin, Protein CAR, RCV1
Gene ID:	5957
NCBI Accession:	NP_002894
UniProt:	P35243
Pathways:	Regulation of G-Protein Coupled Receptor Protein Signaling , Phototransduction

Application Details

Application Notes:	Approved: IHC, IHC-P (5 µg/mL), WB (0.2 - 1 µg/mL) Usage: Immunohistochemistry: This antibody was validated for use in immunohistochemistry on a panel of 21 formalin-fixed, paraffin-embedded (FFPE) human tissues after heat induced antigen retrieval in pH 6.0 citrate buffer. After incubation with the primary antibody, slides were incubated with biotinylated secondary antibody, followed by alkaline phosphatase-streptavidin and chromogen. The stained slides were evaluated by a pathologist to confirm staining specificity. The optimal working concentration for this antibody was determined to be 5 µg/mL.
Comment:	Target Species of Antibody: Human
Restrictions:	For Research Use only

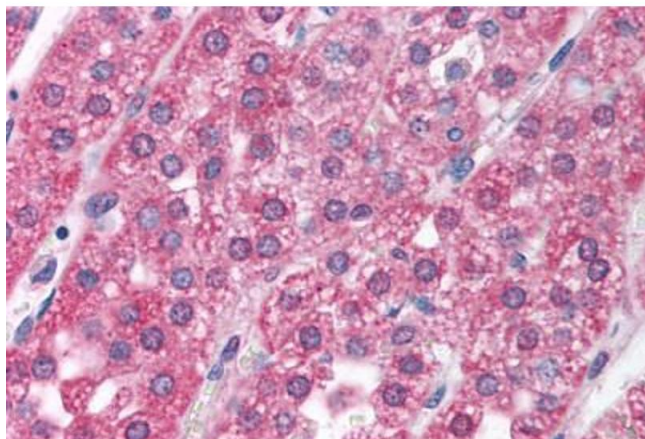
Handling

Format:	Lyophilized
Reconstitution:	After adding water, will consist of PBS buffer with 2 % sucrose
Concentration:	Lot specific
Buffer:	Lyophilized from PBS with 2 % sucrose
Handling Advice:	Avoid repeat freeze-thaw cycles.
Storage:	4 °C,-20 °C
Storage Comment:	Long term: -20°C, the use of 50% glycerol is recommended if storing aliquots in -20°C for long

term use (up to 1 year)

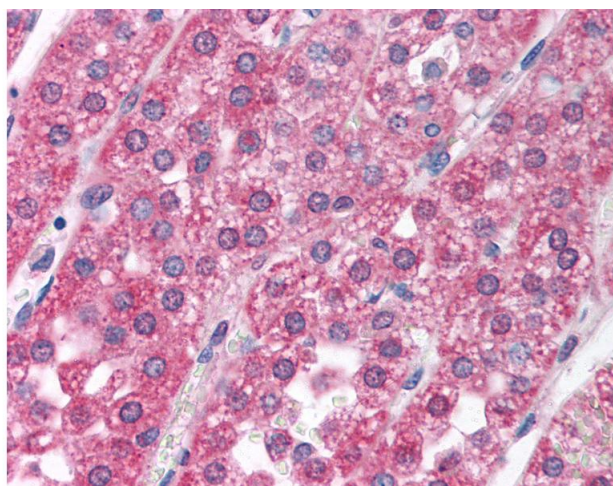
Short term (less than 1 week): 4°C. Avoid freeze-thaw cycles.

Images



Immunohistochemistry

Image 1. Human Adrenal (formalin-fixed, paraffin-embedded) stained with RCVRN antibody ABIN214140 at 5 ug/ml followed by biotinylated goat anti-rabbit IgG secondary antibody ABIN481713, alkaline phosphatase-streptavidin and chromogen.



Immunohistochemistry

Image 2. Anti-RCVRN / Recoverin antibody IHC of human adrenal. Immunohistochemistry of formalin-fixed, paraffin-embedded tissue after heat-induced antigen retrieval. Antibody concentration 5 ug/ml. This image was taken for the unconjugated form of this produ ...