

Datasheet for ABIN6736751  
**anti-SAP18 antibody (AA 30-79)**

## 3 Images

[Go to Product page](#)

## Overview

Quantity:	100 µL
Target:	SAP18
Binding Specificity:	AA 30-79
Reactivity:	Human, Mouse, Rat, Dog, Rabbit, Cow, Guinea Pig, Horse, Xenopus laevis, Bat, Chicken, Monkey, Pig
Host:	Rabbit
Clonality:	Polyclonal
Conjugate:	This SAP18 antibody is un-conjugated
Application:	Western Blotting (WB), Immunohistochemistry (IHC), Immunohistochemistry (Paraffin-embedded Sections) (IHC (p))

## Product Details

Brand:	IHC-plus™
Immunogen:	Synthetic peptide located between aa30-79 of human SAP18 (O00422, NP_005861). Percent identity by BLAST analysis: Human, Gorilla, Orangutan, Gibbon, Monkey, Galago, Marmoset, Mouse, Rat, Elephant, Panda, Dog, Bovine, Bat, Rabbit, Horse, Pig, Guinea pig, Turkey, Zebra finch, Chicken, Platypus, Xenopus (100%), Lizard, Zebrafish (92%), Opossum (85%), Sea squirt (84%).  Type of Immunogen: Synthetic peptide
Isotype:	IgG

## Product Details

Specificity:	Human SAP18
Predicted Reactivity:	Percent identity by BLAST analysis: Human, Mouse, Rat, Dog, Bovine, Rabbit, Guinea pig, Chicken, Xenopus (100%) Zebrafish (92%).
Purification:	Immunoaffinity purified

## Target Details

Target:	SAP18
Alternative Name:	SAP18 ( <a href="#">SAP18 Products</a> )
Background:	Name/Gene ID: SAP18  Synonyms: SAP18, 2HOR0202, SAP18P, Tyrosine kinase
Gene ID:	10284
NCBI Accession:	<a href="#">NP_005861</a>
UniProt:	<a href="#">O00422</a>

## Application Details

Application Notes:	Approved: IHC, IHC-P (5 µg/mL), WB (0.12 µg/mL)  Usage: Immunohistochemistry: This antibody was validated for use in immunohistochemistry on a panel of 21 formalin-fixed, paraffin-embedded (FFPE) human tissues after heat induced antigen retrieval in pH 6.0 citrate buffer. After incubation with the primary antibody, slides were incubated with biotinylated secondary antibody, followed by alkaline phosphatase-streptavidin and chromogen. The stained slides were evaluated by a pathologist to confirm staining specificity. The optimal working concentration for this antibody was determined to be 5 µg/mL.
Comment:	Target Species of Antibody: Human
Restrictions:	For Research Use only

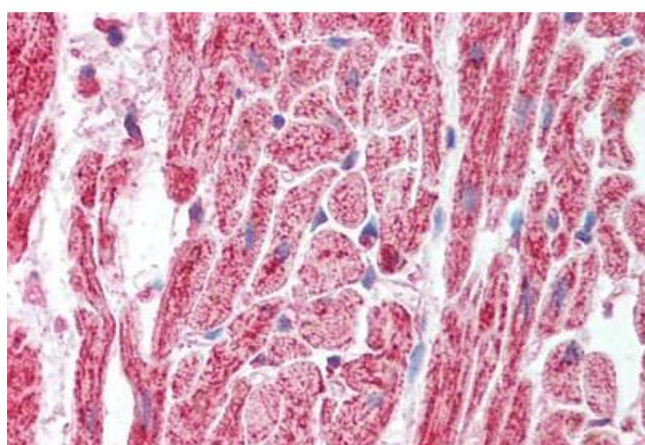
## Handling

Format:	Lyophilized
Reconstitution:	After adding water, will consist of PBS buffer with 2 % sucrose
Concentration:	Lot specific

## Handling

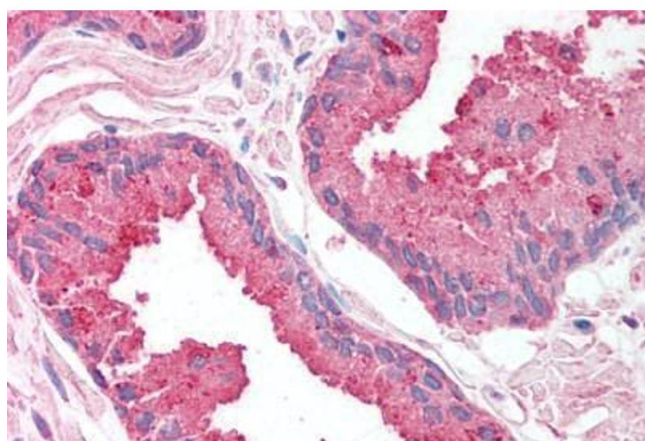
Buffer:	Lyophilized from PBS with 2 % sucrose
Handling Advice:	Avoid repeat freeze-thaw cycles.
Storage:	4 °C, -20 °C
Storage Comment:	Long term: -20°C, the use of 50% glycerol is recommended if storing aliquots in -20°C for long term use (up to 1 year) Short term (less than 1 week): 4°C. Avoid freeze-thaw cycles.

## Images



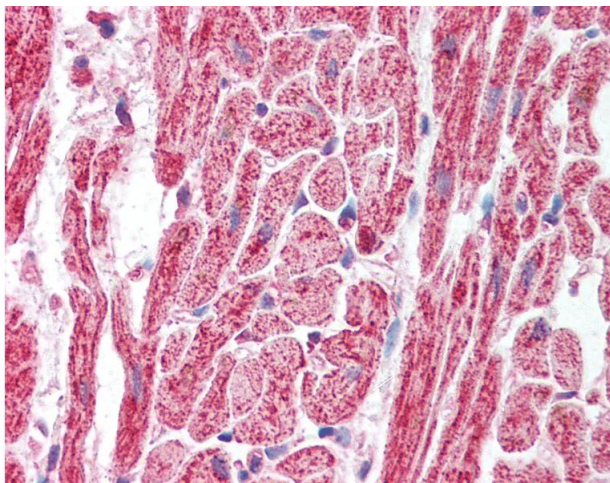
### Immunohistochemistry

**Image 1.** Human Heart (formalin-fixed, paraffin-embedded) stained with SAP18 antibody ABIN214141 at 5 ug/ml followed by biotinylated goat anti-rabbit IgG secondary antibody ABIN481713, alkaline phosphatase-streptavidin and chromogen.



### Immunohistochemistry (Paraffin-embedded Sections)

**Image 2.** Human Prostate (formalin-fixed, paraffin-embedded) stained with SAP18 antibody ABIN214141 at 5 ug/ml followed by biotinylated goat anti-rabbit IgG secondary antibody ABIN481713, alkaline phosphatase-streptavidin and chromogen.



#### Immunohistochemistry

**Image 3.** Anti-SAP18 antibody IHC of human heart. Immunohistochemistry of formalin-fixed, paraffin-embedded tissue after heat-induced antigen retrieval. Antibody concentration 5 ug/ml. This image was taken for the unconjugated form of this product. Other form ...