

Datasheet for ABIN6736759  
**anti-TCF4 antibody (AA 73-122)**



[Go to Product page](#)

2 Images

## Overview

|                      |  |
|----------------------|--|
| Quantity:            | 100 µL   |
| Target:              | TCF4   |
| Binding Specificity: | AA 73-122  |
| Reactivity:          | Human, Mouse, Rat, Horse, Dog, Pig, Monkey, Cow, Rabbit  |
| Host:                | Rabbit   |
| Clonality:           | Polyclonal   |
| Conjugate:           | This TCF4 antibody is un-conjugated  |
| Application:         | Western Blotting (WB), Immunohistochemistry (IHC), Immunohistochemistry (Paraffin-embedded Sections) (IHC (p)) |

## Product Details

|                       |  |
|-----------------------|--|
| Brand:                | IHC-plus™  |
| Immunogen:            | Synthetic peptide located between aa73-122 of human TCF4 (P15884, NP_003190). Percent identity by BLAST analysis: Human, Gorilla, Gibbon, Marmoset, Mouse, Rat, Elephant, Dog, Bovine, Rabbit, Horse, Pig, Opossum (100%), Guinea pig (92%).<br><br>Type of Immunogen: Synthetic peptide |
| Isotype:              | IgG  |
| Specificity:          | Human TCF4   |
| Predicted Reactivity: | Percent identity by BLAST analysis: Human, Mouse, Rat, Horse, Pig (100%) Guinea pig (92%).   |
| Purification:         | Immunoaffinity purified  |

## Target Details

---

|                   |   |
|-------------------|---|
| Target:           | TCF4  |
| Alternative Name: | TCF4 ( <a href="#">TCF4 Products</a> )  |
| Background:       | Name/Gene ID: TCF4<br>Family: Transcription factor<br><br>Synonyms: TCF4, BHLHb19, E2-2, ITF-2, ITF2, PTHS, SEF2-1B, SEF2-1, SEF2-1A, SL3-3 enhancer factor 2, SEF2, SEF-2, TCF-4, Transcription factor 4   |
| Gene ID:          | 6925  |
| NCBI Accession:   | <a href="#">NP_003190</a>   |
| UniProt:          | <a href="#">P15884</a>  |
| Pathways:         | <a href="#">WNT Signaling</a> , <a href="#">Positive Regulation of Peptide Hormone Secretion</a> , <a href="#">Peptide Hormone Metabolism</a> , <a href="#">Regulation of Hormone Metabolic Process</a> , <a href="#">Carbohydrate Homeostasis</a> , <a href="#">Stem Cell Maintenance</a> , <a href="#">Protein targeting to Nucleus</a> |

## Application Details

---

|                    |  |
|--------------------|--|
| Application Notes: | Approved: IHC, IHC-P (5 µg/mL), WB (0.2 - 1 µg/mL)<br><br>Usage: Immunohistochemistry: This antibody was validated for use in immunohistochemistry on a panel of 21 formalin-fixed, paraffin-embedded (FFPE) human tissues after heat induced antigen retrieval in pH 6.0 citrate buffer. After incubation with the primary antibody, slides were incubated with biotinylated secondary antibody, followed by alkaline phosphatase-streptavidin and chromogen. The stained slides were evaluated by a pathologist to confirm staining specificity. The optimal working concentration for this antibody was determined to be 5 µg/mL. |
| Comment:           | Target Species of Antibody: Human  |
| Restrictions:      | For Research Use only  |

## Handling

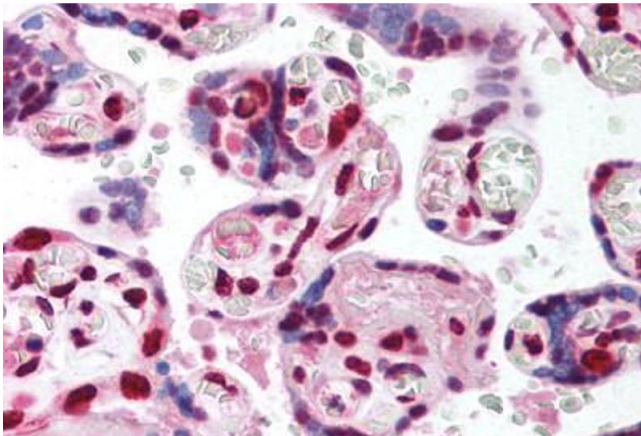
---

|                 |                                    |
|-----------------|------------------------------------|
| Format:         | Lyophilized                        |
| Reconstitution: | Distilled water                    |
| Concentration:  | Lot specific                       |
| Buffer:         | Lyophilized from 2 % Sucrose, PBS. |

## Handling

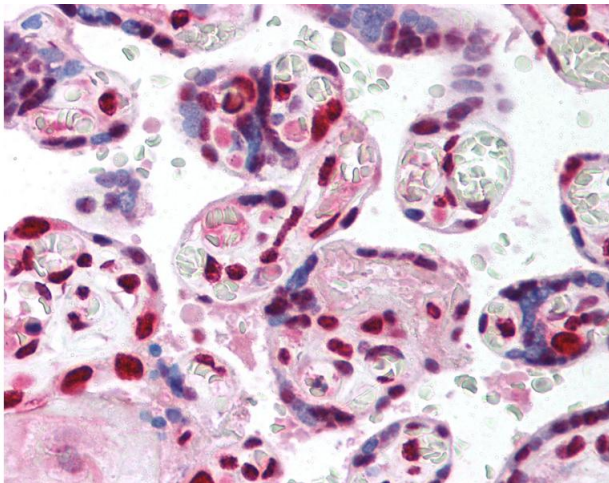
|                  |   |
|------------------|---|
| Handling Advice: | Avoid repeat freeze-thaw cycles.  |
| Storage:         | 4 °C,-20 °C   |
| Storage Comment: | Long term: -20°C, the use of 50% glycerol is recommended if storing aliquots in -20°C for long term use (up to 1 year)<br>Short term (less than 1 week): 4°C. Avoid freeze-thaw cycles. |

## Images



### Immunohistochemistry (Paraffin-embedded Sections)

**Image 1.** Human Placenta (formalin-fixed, paraffin-embedded) stained with TCF4 antibody ABIN214151 at 5 ug/ml followed by biotinylated goat anti-rabbit IgG secondary antibody ABIN481713, alkaline phosphatase-streptavidin and chromogen.



### Immunohistochemistry

**Image 2.** Anti-TCF4 antibody IHC of human placenta. Immunohistochemistry of formalin-fixed, paraffin-embedded tissue after heat-induced antigen retrieval. Antibody concentration 5 ug/ml. This image was taken for the unconjugated form of this product. Other fo ...