

Datasheet for ABIN6736760
anti-TFAM antibody (AA 75-124)



[Go to Product page](#)

2 Images

Overview

Quantity:	100 µL
Target:	TFAM
Binding Specificity:	AA 75-124
Reactivity:	Human, Mouse, Rabbit, Dog, Guinea Pig
Host:	Rabbit
Clonality:	Polyclonal
Conjugate:	This TFAM antibody is un-conjugated
Application:	Western Blotting (WB), Immunohistochemistry (IHC), Immunohistochemistry (Paraffin-embedded Sections) (IHC (p))

Product Details

Brand:	IHC-plus™
Immunogen:	Synthetic peptide located between aa75-124 of human TFAM (Q00059, NP_003192). Percent identity by BLAST analysis: Human, Chimpanzee, Gorilla, Orangutan, Gibbon, Baboon (100%), Monkey, Panda, Bovine, Horse, Pig (91%), Galago, Dog, Bat, Rabbit (83%), Mouse (75%). Type of Immunogen: Synthetic peptide
Isotype:	IgG
Specificity:	Human TFAM
Predicted Reactivity:	Percent identity by BLAST analysis: Human (100%) Bovine, Horse, Pig (91%) Dog, Rabbit (83%).
Purification:	Immunoaffinity purified

Target Details

Target:	TFAM
Alternative Name:	MtTFA / TFAM (TFAM Products)
Background:	Name/Gene ID: TFAM Family: Transcription factor Synonyms: TFAM, MTTF1, TCF-6, TCF6, TCF6L1, Transcription factor 6-like 2, Transcription factor 6-like 3, TCF6L2, TCF6L3, Transcription factor 6, Transcription factor 6-like 1, MTTFA
Gene ID:	7019
NCBI Accession:	NP_003192
UniProt:	Q00059
Pathways:	Chromatin Binding

Application Details

Application Notes:	Approved: IHC, IHC-P (5 µg/mL), WB (0.2 - 1 µg/mL) Usage: Immunohistochemistry: This antibody was validated for use in immunohistochemistry on a panel of 21 formalin-fixed, paraffin-embedded (FFPE) human tissues after heat induced antigen retrieval in pH 6.0 citrate buffer. After incubation with the primary antibody, slides were incubated with biotinylated secondary antibody, followed by alkaline phosphatase-streptavidin and chromogen. The stained slides were evaluated by a pathologist to confirm staining specificity. The optimal working concentration for this antibody was determined to be 5 µg/mL.
Comment:	Target Species of Antibody: Human
Restrictions:	For Research Use only

Handling

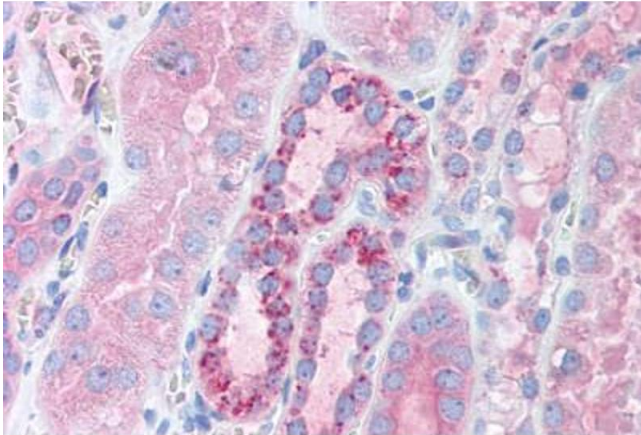
Format:	Lyophilized
Reconstitution:	Distilled water
Concentration:	Lot specific
Buffer:	Lyophilized from PBS with 2 % sucrose
Handling Advice:	Avoid repeat freeze-thaw cycles.

Handling

Storage: 4 °C, -20 °C

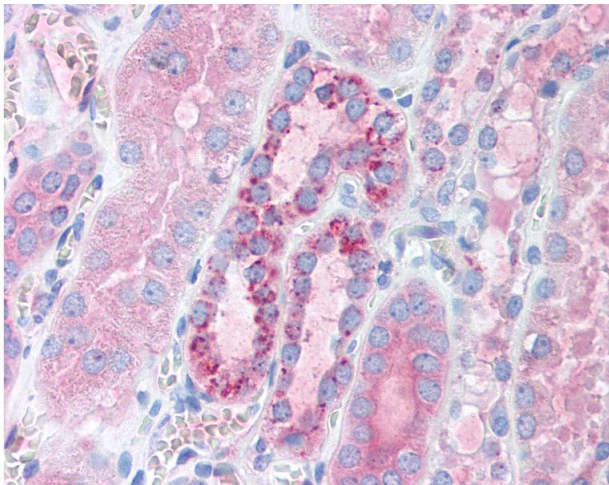
Storage Comment: Long term: -20°C, the use of 50% glycerol is recommended if storing aliquots in -20°C for long term use (up to 1 year)
Short term (less than 1 week): 4°C. Avoid freeze-thaw cycles.

Images



Immunohistochemistry (Paraffin-embedded Sections)

Image 1. Human Kidney (formalin-fixed, paraffin-embedded) stained with TFAM antibody ABIN214152 at 5 ug/ml followed by biotinylated goat anti-rabbit IgG secondary antibody ABIN481713, alkaline phosphatase-streptavidin and chromogen.



Immunohistochemistry

Image 2. Anti-TFAM antibody IHC of human kidney. Immunohistochemistry of formalin-fixed, paraffin-embedded tissue after heat-induced antigen retrieval. Antibody concentration 5 ug/ml. This image was taken for the unconjugated form of this product. Other form ...