

Datasheet for ABIN6736762
anti-LHX1 antibody (AA 120-169)

2 Images

[Go to Product page](#)

Overview

Quantity:	100 µL
Target:	LHX1
Binding Specificity:	AA 120-169
Reactivity:	Human, Mouse, Rat, Cow, Dog, Guinea Pig, Horse, Monkey, Pig, Bat, Chicken, Hamster
Host:	Rabbit
Clonality:	Polyclonal
Conjugate:	This LHX1 antibody is un-conjugated
Application:	Western Blotting (WB), Immunohistochemistry (IHC), Immunohistochemistry (Paraffin-embedded Sections) (IHC (p))

Product Details

Brand:	IHC-plus™
Immunogen:	Synthetic peptide located between aa120-169 of human LHX1 (P48742, NP_005559). Percent identity by BLAST analysis: Human, Chimpanzee, Gorilla, Orangutan, Gibbon, Monkey, Galago, Marmoset, Mouse, Rat, Hamster, Elephant, Panda, Dog, Bovine, Bat, Horse, Pig, Guinea pig, Turkey, Zebra finch, Chicken (100%). Type of Immunogen: Synthetic peptide
Isotype:	IgG
Specificity:	Human LHX1
Predicted Reactivity:	Percent identity by BLAST analysis: Human, Mouse, Rat, Bovine, Chicken (100%).

Product Details

Purification: Immunoaffinity purified

Target Details

Target: LHX1

Alternative Name: LHX1 ([LHX1 Products](#))

Background: Name/Gene ID: LHX1

Synonyms: LHX1, Homeobox protein Lim-1, LIM1, HLim-1, LIM homeobox 1, LIM homeobox protein 1, LIM-1, LIM/homeobox protein Lhx1

Gene ID: 3975

NCBI Accession: [NP_005559](#)

UniProt: [P48742](#)

Application Details

Application Notes: Approved: IHC, IHC-P (5 µg/mL), WB (0.2 - 1 µg/mL)

Usage: Immunohistochemistry: This antibody was validated for use in immunohistochemistry on a panel of 21 formalin-fixed, paraffin-embedded (FFPE) human tissues after heat induced antigen retrieval in pH 6.0 citrate buffer. After incubation with the primary antibody, slides were incubated with biotinylated secondary antibody, followed by alkaline phosphatase-streptavidin and chromogen. The stained slides were evaluated by a pathologist to confirm staining specificity. The optimal working concentration for this antibody was determined to be 5 µg/mL.

Comment: Target Species of Antibody: Human

Restrictions: For Research Use only

Handling

Format: Lyophilized

Reconstitution: After adding water, will consist of PBS buffer with 2 % sucrose

Concentration: Lot specific

Buffer: Lyophilized from PBS with 2 % sucrose

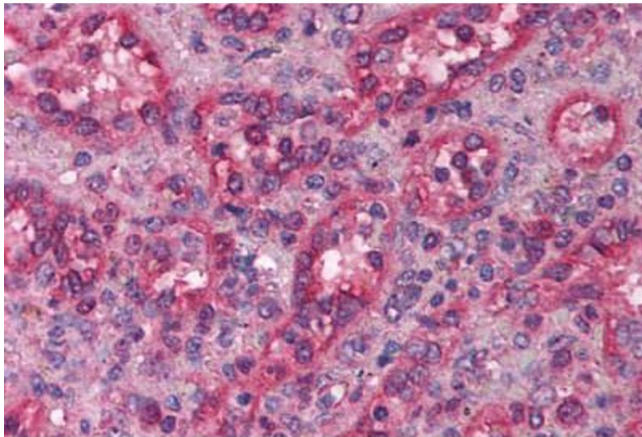
Handling Advice: Avoid repeat freeze-thaw cycles.

Handling

Storage: 4 °C, -20 °C

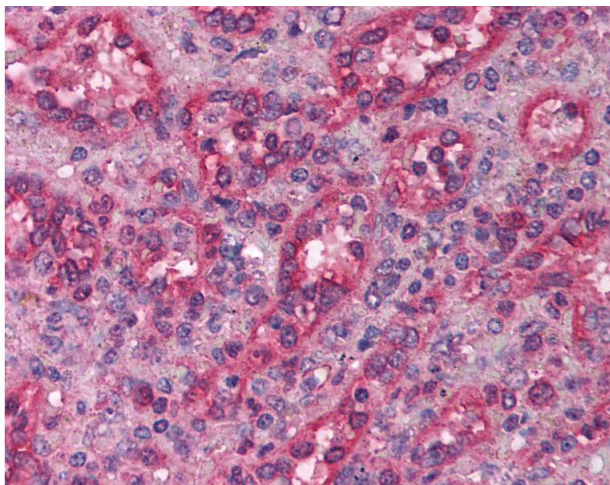
Storage Comment: Long term: -20°C, the use of 50% glycerol is recommended if storing aliquots in -20°C for long term use (up to 1 year)
Short term (less than 1 week): 4°C. Avoid freeze-thaw cycles.

Images



Immunohistochemistry

Image 1. Human Spleen (formalin-fixed, paraffin-embedded) stained with LHX1 antibody ABIN214155 at 5 ug/ml followed by biotinylated goat anti-rabbit IgG secondary antibody ABIN481713, alkaline phosphatase-streptavidin and chromogen.



Immunohistochemistry

Image 2. Anti-LHX1 antibody IHC of human spleen. Immunohistochemistry of formalin-fixed, paraffin-embedded tissue after heat-induced antigen retrieval. Antibody concentration 5 ug/ml. This image was taken for the unconjugated form of this product. Other form ...