

Datasheet for ABIN6736763
anti-HDLBP antibody (N-Term)

2 Images

[Go to Product page](#)

Overview

Quantity:	100 µL
Target:	HDLBP
Binding Specificity:	N-Term
Reactivity:	Human, Rat, Horse, Dog, Guinea Pig, Rabbit, Bat, Hamster, Pig, Monkey
Host:	Rabbit
Clonality:	Polyclonal
Conjugate:	This HDLBP antibody is un-conjugated
Application:	Western Blotting (WB), Immunohistochemistry (IHC), Immunohistochemistry (Paraffin-embedded Sections) (IHC (p))

Product Details

Brand:	IHC-plus™
Immunogen:	Synthetic peptide from N-Terminus of human HDLBP (Q00341, NP_005327). Percent identity by BLAST analysis: Human, Chimpanzee, Gorilla, Orangutan, Gibbon, Galago, Marmoset, Rat, Hamster, Elephant, Dog, Bat, Rabbit, Horse, Pig, Guinea pig (100%), Mouse, Bovine, Opossum, Turkey, Chicken (92%), Platypus, Lizard (84%), Xenopus (81%). Type of Immunogen: Synthetic peptide
Isotype:	IgG
Specificity:	Human HDLBP
Predicted Reactivity:	Percent identity by BLAST analysis: Human, Rat, Dog, Pig, Guinea pig (100%) Mouse, Bovine,

Product Details

Chicken (92%) Xenopus (81%).

Purification: Immunoaffinity purified

Target Details

Target: HDLBP

Alternative Name: HDLBP / Vigilin ([HDLBP Products](#))

Background: Name/Gene ID: HDLBP

Synonyms: HDLBP, HBP, VGL, HDL-binding protein, PRO2900, Vigilin

Gene ID: 3069

NCBI Accession: [NP_005327](#)

UniProt: [Q00341](#)

Application Details

Application Notes: Approved: IHC, IHC-P (5 µg/mL), WB (0.2 - 1 µg/mL)

Usage: Immunohistochemistry: This antibody was validated for use in immunohistochemistry on a panel of 21 formalin-fixed, paraffin-embedded (FFPE) human tissues after heat induced antigen retrieval in pH 6.0 citrate buffer. After incubation with the primary antibody, slides were incubated with biotinylated secondary antibody, followed by alkaline phosphatase-streptavidin and chromogen. The stained slides were evaluated by a pathologist to confirm staining specificity. The optimal working concentration for this antibody was determined to be 5 µg/mL.

Comment: Target Species of Antibody: Human

Restrictions: For Research Use only

Handling

Format: Lyophilized

Reconstitution: After adding water, will consist of PBS buffer with 2 % sucrose

Concentration: Lot specific

Buffer: Lyophilized from PBS with 2 % sucrose

Handling

Handling Advice:	Avoid repeat freeze-thaw cycles.
Storage:	4 °C,-20 °C
Storage Comment:	Long term: -20°C, the use of 50% glycerol is recommended if storing aliquots in -20°C for long term use (up to 1 year) Short term (less than 1 week): 4°C. Avoid freeze-thaw cycles.

Images

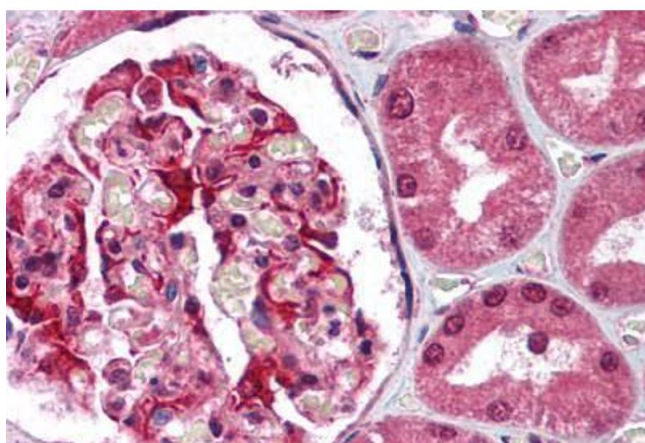
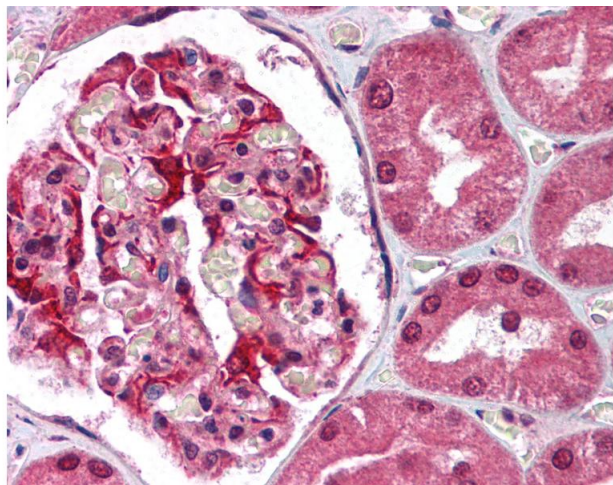


Image 1. Kidney



Immunohistochemistry

Image 2. Anti-HDLBP antibody IHC of human kidney. Immunohistochemistry of formalin-fixed, paraffin-embedded tissue after heat-induced antigen retrieval. Antibody concentration 5 ug/ml. This image was taken for the unconjugated form of this product. Other for ...