



[Go to Product page](#)

Datasheet for ABIN6737643

anti-IRF1 antibody (AA 110-159)

1 Image

Overview

Quantity:	100 µL
Target:	IRF1
Binding Specificity:	AA 110-159
Reactivity:	Human, Mouse, Rat, Dog, Rabbit, Cow, Sheep, Horse, Pig, Monkey, Bat
Host:	Rabbit
Clonality:	Polyclonal
Conjugate:	This IRF1 antibody is un-conjugated
Application:	Western Blotting (WB)

Product Details

Immunogen:	Synthetic peptide located between aa110-159 of human IRF1 (P10914, NP_002189). Percent identity by BLAST analysis: Human, Chimpanzee, Gorilla, Baboon, Monkey, Galago, Panda, Dog, Bat, Horse (100%), Gibbon, Ferret, Shrew, Elephant, Armadillo (92%), Rabbit, Pig, Guinea pig (85%), Mouse, Rat, Sheep, Bovine (84%). Type of Immunogen: Synthetic peptide
Isotype:	IgG
Specificity:	Human IRF1
Predicted Reactivity:	Percent identity by BLAST analysis: Human (100%) Rabbit, Pig (85%) Mouse, Rat, Sheep, Bovine (84%).
Purification:	Immunoaffinity purified

Target Details

Target:	IRF1
Alternative Name:	IRF1 / IRF-1 / MAR (IRF1 Products)
Background:	Name/Gene ID: IRF1 Synonyms: IRF1, Interferon regulatory factor 1, IRF-1, MAR
Gene ID:	3659
NCBI Accession:	NP_002189
UniProt:	P10914
Pathways:	Interferon-gamma Pathway , Response to Growth Hormone Stimulus , Positive Regulation of Immune Effector Process , Hepatitis C , Autophagy

Application Details

Application Notes:	Approved: WB Usage: ELISA titer using peptide based assay: 1:1562500. Western Blot: Suggested dilution at 1 µg/mL in 5 % skim milk / PBS buffer, and HRP conjugated anti-Rabbit IgG should be diluted in 1:50000 - 100000 as second antibody.
Comment:	Target Species of Antibody: Human
Restrictions:	For Research Use only

Handling

Format:	Lyophilized
Reconstitution:	Distilled Water.
Concentration:	Lot specific
Buffer:	Lyophilized from PBS with 2 % sucrose
Handling Advice:	Avoid repeat freeze-thaw cycles.
Storage:	4 °C, -20 °C
Storage Comment:	Long term: -20°C, the use of 50% glycerol is recommended if storing aliquots in -20°C for long term use (up to 1 year) Short term (less than 1 week): 4°C. Avoid freeze-thaw cycles.

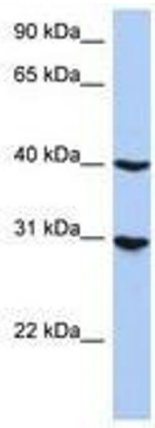


Image 1.