



[Go to Product page](#)

Datasheet for ABIN6737648
anti-XBP1 antibody (C-Term)

1 Image

Overview

| | |
|----------------------|---|
| Quantity: | 100 µL |
| Target: | XBP1 |
| Binding Specificity: | C-Term |
| Reactivity: | Human, Cow, Monkey, Zebrafish (Danio rerio) |
| Host: | Rabbit |
| Clonality: | Polyclonal |
| Conjugate: | This XBP1 antibody is un-conjugated |
| Application: | Western Blotting (WB) |

Product Details

| | |
|-----------------------|---|
| Immunogen: | Synthetic peptide from C-Terminus of human XBP1 (P17861, NP_005071). Percent identity by BLAST analysis: Human, Monkey, Bovine (100%), Mouse, Rat, Chicken (93%), Elephant, Dog, Rabbit, Horse, Pig (92%), Zebra finch, Platypus, Xenopus, Zebrafish (84%). Type of Immunogen: Synthetic peptide |
| Isotype: | IgG |
| Specificity: | Human XBP1 |
| Predicted Reactivity: | Percent identity by BLAST analysis: Human, Bovine (100%) Mouse, Rat (93%) Dog, Rabbit, Pig (92%) Xenopus, Zebrafish (84%). |
| Purification: | Immunoaffinity purified |

Target Details

| | |
|-------------------|--|
| Target: | XBP1 |
| Alternative Name: | XBP1 (XBP1 Products) |
| Background: | Name/Gene ID: XBP1 Synonyms: XBP1, X-box binding protein 1, X-box-binding protein 1, XBP2, TREB5, XBP-1 |
| Gene ID: | 7494 |
| NCBI Accession: | NP_005071 |
| UniProt: | P17861 |
| Pathways: | ER-Nucleus Signaling , Unfolded Protein Response |

Application Details

| | |
|--------------------|--|
| Application Notes: | Approved: WB Usage: ELISA titer using peptide based assay: 1:1562500. Western Blot: Suggested dilution at 1 µg/mL in 5 % skim milk / PBS buffer, and HRP conjugated anti-Rabbit IgG should be diluted in 1:50000 - 100000 as second antibody. |
| Comment: | Target Species of Antibody: Human |
| Restrictions: | For Research Use only |

Handling

| | |
|------------------|---|
| Format: | Lyophilized |
| Reconstitution: | Distilled Water. |
| Concentration: | Lot specific |
| Buffer: | Lyophilized from PBS with 2 % sucrose |
| Handling Advice: | Avoid repeat freeze-thaw cycles. |
| Storage: | 4 °C,-20 °C |
| Storage Comment: | Long term: -20°C, the use of 50% glycerol is recommended if storing aliquots in -20°C for long term use (up to 1 year) Short term (less than 1 week): 4°C. Avoid freeze-thaw cycles. |

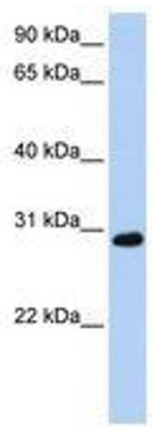


Image 1.