



[Go to Product page](#)

Datasheet for ABIN6737650  
**anti-OLIG2 antibody (N-Term)**

1 Image

Overview

Quantity:	100 µL
Target:	OLIG2
Binding Specificity:	N-Term
Reactivity:	Human, Mouse, Rat, Guinea Pig, Chicken, Bat, Monkey
Host:	Rabbit
Clonality:	Polyclonal
Conjugate:	This OLIG2 antibody is un-conjugated
Application:	Western Blotting (WB)

Product Details

Immunogen:	Synthetic peptide from N-Terminus of human OLIG2 (Q13516, NP_005797). Percent identity by BLAST analysis: Human, Chimpanzee, Gorilla, Baboon, Monkey, Galago, Marmoset, Mouse, Rat, Elephant, Bat, Opossum, Guinea pig, Chicken, Armadillo (100%).  Type of Immunogen: Synthetic peptide
Isotype:	IgG
Specificity:	Human Olig2
Predicted Reactivity:	Percent identity by BLAST analysis: Human, Mouse, Rat, Guinea pig, Chicken (100%).
Purification:	Immunoaffinity purified

## Target Details

---

Target: OLIG2

Alternative Name: OLIG2 ([OLIG2 Products](#))

Background: Name/Gene ID: OLIG2

Synonyms: OLIG2, BHLHB1, BHLHe19, OLIGO2, PRKCBP2, RACK17

Gene ID: 10215

NCBI Accession: [NP\\_005797](#)

UniProt: [Q13516](#)

## Application Details

---

Application Notes: Approved: WB

Usage: ELISA titer using peptide based assay: 1:62500. Western Blot: Suggested dilution at 1  $\mu$ g/mL in 5 % skim milk / PBS buffer, and HRP conjugated anti-Rabbit IgG should be diluted in 1:50000 - 100000 as second antibody.

Not recommended for: IHC-P

Comment: Target Species of Antibody: Human

Restrictions: For Research Use only

## Handling

---

Format: Lyophilized

Reconstitution: Distilled Water.

Concentration: Lot specific

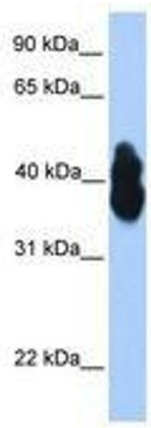
Buffer: Lyophilized from PBS with 2 % sucrose

Handling Advice: Avoid repeat freeze-thaw cycles.

Storage: 4 °C, -20 °C

Storage Comment: Long term: -20°C, the use of 50% glycerol is recommended if storing aliquots in -20°C for long term use (up to 1 year)

Short term (less than 1 week): 4°C. Avoid freeze-thaw cycles.



**Image 1.**