



[Go to Product page](#)

Datasheet for ABIN6737654
anti-ELF3 antibody (AA 182-231)

1 Image

Overview

Quantity:	100 µL
Target:	ELF3
Binding Specificity:	AA 182-231
Reactivity:	Human, Cow, Rabbit, Monkey
Host:	Rabbit
Clonality:	Polyclonal
Conjugate:	This ELF3 antibody is un-conjugated
Application:	Western Blotting (WB)

Product Details

Immunogen:	Synthetic peptide located between aa182-231 of human Elf3 (P78545, NP_004424). Percent identity by BLAST analysis: Human, Gorilla, Orangutan, Monkey, Rabbit (100%), Gibbon, Horse, Pig (92%), Bovine (85%). Type of Immunogen: Synthetic peptide
Isotype:	IgG
Specificity:	Human ELF3
Predicted Reactivity:	Percent identity by BLAST analysis: Human, Rabbit (100%) Pig (92%) Bovine (85%).
Purification:	Immunoaffinity purified

Target Details

Target: ELF3

Alternative Name: ELF3 / ESE1 ([ELF3 Products](#))

Background: Name/Gene ID: ELF3

Synonyms: ELF3, ERT, ESE-1, ESE1, JEN, ESX, E74-like factor 3, EPR-1

Gene ID: 1999

NCBI Accession: [NP_004424](#)

UniProt: [P78545](#)

Application Details

Application Notes: Approved: WB

Usage: ELISA titer using peptide based assay: 1:62500. Western Blot: Suggested dilution at 1 μ g/mL in 5 % skim milk / PBS buffer, and HRP conjugated anti-Rabbit IgG should be diluted in 1:50000 - 100000 as second antibody.

Comment: Target Species of Antibody: Human

Restrictions: For Research Use only

Handling

Format: Lyophilized

Reconstitution: Distilled Water.

Concentration: Lot specific

Buffer: Lyophilized from PBS with 2 % sucrose

Handling Advice: Avoid repeat freeze-thaw cycles.

Storage: 4 °C, -20 °C

Storage Comment: Long term: -20°C, the use of 50% glycerol is recommended if storing aliquots in -20°C for long term use (up to 1 year)

Short term (less than 1 week): 4°C. Avoid freeze-thaw cycles.

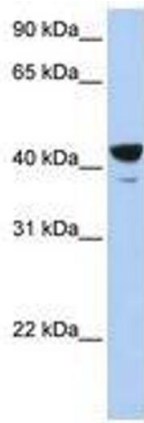


Image 1.