



[Go to Product page](#)

Datasheet for ABIN6737656
anti-FOXE1 antibody (AA 254-303)

1 Image

Overview

Quantity:	100 µL
Target:	FOXE1
Binding Specificity:	AA 254-303
Reactivity:	Human, Mouse, Rat, Pig, Bat, Monkey
Host:	Rabbit
Clonality:	Polyclonal
Conjugate:	This FOXE1 antibody is un-conjugated
Application:	Western Blotting (WB)

Product Details

Immunogen:	Synthetic peptide located between aa254-303 of human FOXE1 (O00358, NP_004464). Percent identity by BLAST analysis: Human, Gorilla, Monkey, Mouse, Rat, Elephant, Bat, Pig (100%), Bovine (92%). Type of Immunogen: Synthetic peptide
Isotype:	IgG
Specificity:	Human FOXE1
Predicted Reactivity:	Percent identity by BLAST analysis: Human, Mouse, Rat (100%) Bovine (92%).
Purification:	Immunoaffinity purified

Target Details

Target:	FOXE1
Alternative Name:	FOXE2 / FOXE1 (FOXE1 Products)
Background:	Name/Gene ID: FOXE1 Family: Transcription factor Synonyms: FOXE1, FKHL15, Forkhead related protein 15, Forkhead box e1, Forkhead box E2, Forkhead box protein E2, FOXE2, HNF-3/fork head-like protein 5, TITF2, TTF-2, Thyroid transcription factor 2, Forkhead box protein E1, HFKH4, HFKL5
Gene ID:	2304
NCBI Accession:	NP_004464
UniProt:	O00358

Application Details

Application Notes:	Approved: WB Usage: ELISA titer using peptide based assay: 1:62500. Western Blot: Suggested dilution at 1 µg/mL in 5 % skim milk / PBS buffer, and HRP conjugated anti-Rabbit IgG should be diluted in 1:50000 - 100000 as second antibody.
Comment:	Target Species of Antibody: Human
Restrictions:	For Research Use only

Handling

Format:	Lyophilized
Reconstitution:	Distilled Water.
Concentration:	Lot specific
Buffer:	Lyophilized from PBS with 2 % sucrose
Handling Advice:	Avoid repeat freeze-thaw cycles.
Storage:	4 °C, -20 °C
Storage Comment:	Long term: -20°C, the use of 50% glycerol is recommended if storing aliquots in -20°C for long term use (up to 1 year)

Handling

Short term (less than 1 week): 4°C. Avoid freeze-thaw cycles.

Images

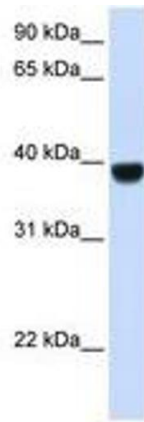


Image 1.