

Datasheet for ABIN6737659

anti-Zinc finger protein 82 homolog (ZFP82) (AA 401-450) antibody



[Go to Product page](#)

1 Image

Overview

Quantity:	100 µL
Target:	Zinc finger protein 82 homolog (ZFP82)
Binding Specificity:	AA 401-450
Reactivity:	Human, Mouse, Rat, Cow, Horse, Monkey, Pig
Host:	Rabbit
Clonality:	Polyclonal
Conjugate:	Un-conjugated
Application:	Western Blotting (WB)

Product Details

Immunogen:	Synthetic peptide located between aa401-450 of human ZFP82 (Q8N141, NP_597723). Percent identity by BLAST analysis: Human, Chimpanzee, Gorilla, Gibbon, Monkey, Galago, Marmoset, Mouse, Bovine, Horse, Pig (100%), Guinea pig (92%), Elephant, Panda, Rabbit (85%), Rat (78%). Type of Immunogen: Synthetic peptide
Isotype:	IgG
Specificity:	Human ZFP82 / ZNF545
Predicted Reactivity:	Percent identity by BLAST analysis: Human, Monkey, Mouse, Rat (100%) Bovine (84%).
Purification:	Immunoaffinity purified

Target Details

Target:	Zinc finger protein 82 homolog (ZFP82)
Alternative Name:	ZFP82 / ZNF545 (ZFP82 Products)
Background:	Name/Gene ID: ZFP82 Family: Zinc Finger Synonyms: ZFP82, KIAA1948, ZNF545, Zfp-82, Zinc finger protein 82 homolog, Zinc finger protein 545, ZFP82 zinc finger protein, Zinc finger protein 85
Gene ID:	284406
NCBI Accession:	NP_597723
UniProt:	Q8N141

Application Details

Application Notes:	Approved: WB Usage: ELISA titer using peptide based assay: 1:62500. Western Blot: Suggested dilution at 1 μ g/mL in 5 % skim milk / PBS buffer, and HRP conjugated anti-Rabbit IgG should be diluted in 1:50000 - 100000 as second antibody.
Comment:	Target Species of Antibody: Human
Restrictions:	For Research Use only

Handling

Format:	Lyophilized
Reconstitution:	Distilled Water.
Concentration:	Lot specific
Buffer:	Lyophilized from PBS with 2 % sucrose
Handling Advice:	Avoid repeat freeze-thaw cycles.
Storage:	4 °C, -20 °C
Storage Comment:	Long term: -20°C, the use of 50% glycerol is recommended if storing aliquots in -20°C for long term use (up to 1 year) Short term (less than 1 week): 4°C. Avoid freeze-thaw cycles.

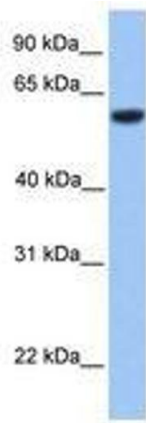


Image 1.