



[Go to Product page](#)

Datasheet for ABIN6737674
anti-ISL1 antibody (AA 102-151)

1 Image

Overview

Quantity:	100 µL
Target:	ISL1
Binding Specificity:	AA 102-151
Reactivity:	Human, Mouse, Rat, Zebrafish (Danio rerio), Cow, Rabbit, Dog, Sheep, Guinea Pig, Monkey, Chicken, Pig, Hamster, Xenopus laevis
Host:	Rabbit
Clonality:	Polyclonal
Conjugate:	This ISL1 antibody is un-conjugated
Application:	Western Blotting (WB)

Product Details

Immunogen:	Synthetic peptide located between aa102-151 of human ISL1 (P61371, NP_002193). Percent identity by BLAST analysis: Human, Chimpanzee, Gorilla, Gibbon, Galago, Marmoset, Mouse, Rat, Sheep, Hamster, Elephant, Dog, Bovine, Rabbit, Pig, Opossum, Guinea pig, Zebra finch, Chicken, Platypus, Lizard, Xenopus, Stickleback (100%), Horse (92%), Salmon, Zebrafish (84%). Type of Immunogen: Synthetic peptide
Isotype:	IgG
Specificity:	Human ISL1 / Islet 1
Predicted Reactivity:	Percent identity by BLAST analysis: Human, Mouse, Rat, Dog, Bovine, Rabbit, Pig, Chicken, Xenopus (100%) Horse (92%) Zebrafish (84%).

Product Details

Purification: Immunoaffinity purified

Target Details

Target: ISL1

Alternative Name: ISLET-1 / ISL1 ([ISL1 Products](#))

Background: Name/Gene ID: ISL1

Synonyms: ISL1, Isl-1, ISLET1, ISL LIM homeobox 1, Islet-1

Gene ID: 3670

NCBI Accession: [NP_002193](#)

UniProt: [P61371](#)

Pathways: [Positive Regulation of Peptide Hormone Secretion](#), [Intracellular Steroid Hormone Receptor Signaling Pathway](#), [Peptide Hormone Metabolism](#), [Regulation of Intracellular Steroid Hormone Receptor Signaling](#), [Nuclear Hormone Receptor Binding](#), [Chromatin Binding](#)

Application Details

Application Notes: Approved: WB

Usage: ELISA titer using peptide based assay: 1:312500. Western Blot: Suggested dilution at 1 µg/mL in 5 % skim milk / PBS buffer, and HRP conjugated anti-Rabbit IgG should be diluted in 1:50000 - 100000 as second antibody.

Not recommended for: IHC-P

Comment: Target Species of Antibody: Human

Restrictions: For Research Use only

Handling

Format: Lyophilized

Reconstitution: Distilled Water.

Concentration: Lot specific

Buffer: Lyophilized from PBS with 2 % sucrose

Handling

Handling Advice: Avoid repeat freeze-thaw cycles.

Storage: 4 °C, -20 °C

Storage Comment: Long term: -20°C, the use of 50% glycerol is recommended if storing aliquots in -20°C for long term use (up to 1 year)

Short term (less than 1 week): 4°C. Avoid freeze-thaw cycles.

Images

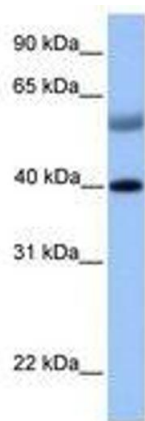


Image 1.