



Datasheet for ABIN6737680
anti-Paired Box 3 antibody (AA 144-193)



[Go to Product page](#)

1 Image

Overview

Quantity:	100 µL
Target:	Paired Box 3 (PAX3)
Binding Specificity:	AA 144-193
Reactivity:	Human, Mouse, Rat, Dog, Cow, Horse, Rabbit, Guinea Pig, Bat, Monkey, Pig
Host:	Rabbit
Clonality:	Polyclonal
Conjugate:	This Paired Box 3 antibody is un-conjugated
Application:	Western Blotting (WB)

Product Details

Immunogen:	Synthetic peptide located between aa144-193 of human PAX3 (Q494Z3, NP_852123). Percent identity by BLAST analysis: Human, Chimpanzee, Gorilla, Gibbon, Monkey, Marmoset, Mouse, Rat, Elephant, Dog, Bovine, Bat, Rabbit, Horse, Pig, Guinea pig (100%), Galago (92%), Platypus, Lizard (85%). Type of Immunogen: Synthetic peptide
Isotype:	IgG
Specificity:	Human PAX3
Predicted Reactivity:	Percent identity by BLAST analysis: Human, Mouse, Rat, Dog, Bovine, Rabbit, Horse, Pig, Guinea pig (100%).
Purification:	Immunoaffinity purified

Target Details

Target:	Paired Box 3 (PAX3)
Alternative Name:	PAX3 (PAX3 Products)
Background:	Name/Gene ID: PAX3 Synonyms: PAX3, CDHS, Paired domain gene 3, Paired box protein Pax-3, Paired domain gene HuP2, Waardenburg syndrome 1, WS1, HUP2, Paired box 3, Paired box homeotic gene 3, WS3
Gene ID:	5077
NCBI Accession:	NP_852123
UniProt:	P23759
Pathways:	Sensory Perception of Sound , Tube Formation

Application Details

Application Notes:	Approved: WB Usage: ELISA titer using peptide based assay: 1:62500. Western Blot: Suggested dilution at 1 μ g/mL in 5 % skim milk / PBS buffer, and HRP conjugated anti-Rabbit IgG should be diluted in 1:50000 - 100000 as second antibody.
Comment:	Target Species of Antibody: Human
Restrictions:	For Research Use only

Handling

Format:	Lyophilized
Reconstitution:	Distilled Water.
Concentration:	Lot specific
Buffer:	Lyophilized from PBS with 2 % sucrose
Storage:	4 °C,-20 °C
Storage Comment:	Long term: -20°C, the use of 50% glycerol is recommended if storing aliquots in -20°C for long term use (up to 1 year) Short term (less than 1 week): 4°C. Avoid freeze-thaw cycles.

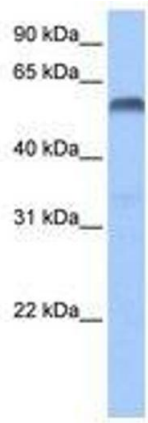


Image 1.