

Datasheet for ABIN6737682
anti-SPDEF/PSE antibody (AA 74-123)



[Go to Product page](#)

1 Image

Overview

Quantity:	100 µL
Target:	SPDEF/PSE (SPDEF)
Binding Specificity:	AA 74-123
Reactivity:	Human, Rabbit
Host:	Rabbit
Clonality:	Polyclonal
Conjugate:	This SPDEF/PSE antibody is un-conjugated
Application:	Western Blotting (WB)

Product Details

Immunogen:	Synthetic peptide located between aa74-123 of human SPDEF (O95238, NP_036523). Percent identity by BLAST analysis: Human (100%), Gorilla, Gibbon, Galago, Marmoset, Elephant, Panda, Dog, Bovine, Bat, Pig, Guinea pig (92%), Rabbit (85%), Horse (84%). Type of Immunogen: Synthetic peptide
Isotype:	IgG
Specificity:	Human SPDEF
Predicted Reactivity:	Percent identity by BLAST analysis: Human (100%) Dog, Bovine, Pig (92%) Rabbit (85%).
Purification:	Immunoaffinity purified

Target Details

Target:	SPDEF/PSE (SPDEF)
Alternative Name:	PDEF / SPDEF (SPDEF Products)
Background:	Name/Gene ID: SPDEF Subfamily: ETS Family: Transcription factor Synonyms: SPDEF, BA375E1.3, PDEF, RP11-375E1__A.3, Prostate-derived Ets factor, Prostate-specific Ets, PSE
Gene ID:	25803
NCBI Accession:	NP_036523
UniProt:	O95238

Application Details

Application Notes:	Approved: WB Usage: ELISA titer using peptide based assay: 1:312500. Western Blot: Suggested dilution at 1 µg/mL in 5 % skim milk / PBS buffer, and HRP conjugated anti-Rabbit IgG should be diluted in 1:50000 - 100000 as second antibody.
Comment:	Target Species of Antibody: Human
Restrictions:	For Research Use only

Handling

Format:	Lyophilized
Reconstitution:	Distilled Water.
Concentration:	Lot specific
Buffer:	Lyophilized from PBS with 2 % sucrose
Handling Advice:	Avoid repeat freeze-thaw cycles.
Storage:	4 °C, -20 °C
Storage Comment:	Long term: -20°C, the use of 50% glycerol is recommended if storing aliquots in -20°C for long term use (up to 1 year)

Handling

Short term (less than 1 week): 4°C. Avoid freeze-thaw cycles.

Images

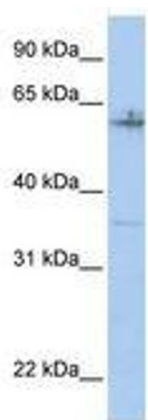


Image 1.