



[Go to Product page](#)

Datasheet for ABIN6737684
anti-HCFC2 antibody (AA 551-600)

1 Image

Overview

Quantity:	100 µL
Target:	HCFC2
Binding Specificity:	AA 551-600
Reactivity:	Human, Mouse, Rat, Horse
Host:	Rabbit
Clonality:	Polyclonal
Conjugate:	This HCFC2 antibody is un-conjugated
Application:	Western Blotting (WB)

Product Details

Immunogen:	Synthetic peptide located between aa551-600 of human HCFC2 (Q9Y5Z7, NP_037452). Percent identity by BLAST analysis: Human, Gibbon (100%), Monkey, Galago, Dog, Bovine, Rabbit, Pig, Guinea pig (92%), Mouse, Rat, Elephant, Bat, Horse (85%). Type of Immunogen: Synthetic peptide
Isotype:	IgG
Specificity:	Human HCFC2
Predicted Reactivity:	Percent identity by BLAST analysis: Human (100%) Dog, Bovine, Rabbit, Pig, Guinea pig (92%) Mouse, Rat, Horse (85%).
Purification:	Immunoaffinity purified

Target Details

Target: HCFC2

Alternative Name: HCFC2 ([HCFC2 Products](#))

Background: Name/Gene ID: HCFC2

Synonyms: HCFC2, Host cell factor 2, Host cell factor C2, HCF-2, HCF2, C2 factor

Gene ID: 29915

NCBI Accession: [NP_037452](#)

UniProt: [Q9Y5Z7](#)

Application Details

Application Notes: Approved: WB

Usage: ELISA titer using peptide based assay: 1:1562500. Western Blot: Suggested dilution at 1 µg/mL in 5 % skim milk / PBS buffer, and HRP conjugated anti-Rabbit IgG should be diluted in 1:50000 - 100000 as second antibody.

Comment: Target Species of Antibody: Human

Restrictions: For Research Use only

Handling

Format: Lyophilized

Reconstitution: Distilled Water.

Concentration: Lot specific

Buffer: Lyophilized from PBS with 2 % sucrose

Handling Advice: Avoid repeat freeze-thaw cycles.

Storage: 4 °C, -20 °C

Storage Comment: Long term: -20°C, the use of 50% glycerol is recommended if storing aliquots in -20°C for long term use (up to 1 year)

Short term (less than 1 week): 4°C. Avoid freeze-thaw cycles.

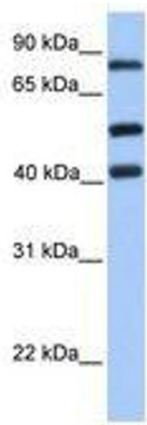


Image 1.