



[Go to Product page](#)

Datasheet for ABIN6737698
anti-DLX1 antibody (AA 182-231)

1 Image

Overview

Quantity:	100 µL
Target:	DLX1
Binding Specificity:	AA 182-231
Reactivity:	Human, Mouse, Rat, Guinea Pig, Horse, Dog, Cow, Monkey, Pig
Host:	Rabbit
Clonality:	Polyclonal
Conjugate:	This DLX1 antibody is un-conjugated
Application:	Western Blotting (WB)

Product Details

Immunogen:	Synthetic peptide located between aa182-231 of human DLX1 (P56177, NP_835221). Percent identity by BLAST analysis: Human, Chimpanzee, Gorilla, Gibbon, Monkey, Galago, Marmoset, Mouse, Rat, Elephant, Panda, Dog, Bovine, Horse, Pig, Guinea pig (100%), Hamster, Bat, Rabbit, Opossum, Platypus (92%), Zebra finch, Xenopus (85%). Type of Immunogen: Synthetic peptide
Isotype:	IgG
Specificity:	Human DLX1
Predicted Reactivity:	Percent identity by BLAST analysis: Human, Mouse, Rat, Dog, Bovine, Guinea pig (100%).
Purification:	Immunoaffinity purified

Target Details

Target:	DLX1
Alternative Name:	DLX1 (DLX1 Products)
Background:	Name/Gene ID: DLX1 Synonyms: DLX1, Distal-less homeo box 1, Homeobox protein DLX-1, Distal-less homeobox 1
Gene ID:	1745
NCBI Accession:	NP_835221
UniProt:	Q64317

Application Details

Application Notes:	Approved: WB Usage: ELISA titer using peptide based assay: 1:1562500. Western Blot: Suggested dilution at 1 µg/mL in 5 % skim milk / PBS buffer, and HRP conjugated anti-Rabbit IgG should be diluted in 1:50000 - 100000 as second antibody.
Comment:	Target Species of Antibody: Human
Restrictions:	For Research Use only

Handling

Format:	Lyophilized
Reconstitution:	Distilled Water.
Concentration:	Lot specific
Buffer:	Lyophilized from PBS with 2 % sucrose
Handling Advice:	Avoid repeat freeze-thaw cycles.
Storage:	4 °C, -20 °C
Storage Comment:	Long term: -20°C, the use of 50% glycerol is recommended if storing aliquots in -20°C for long term use (up to 1 year) Short term (less than 1 week): 4°C. Avoid freeze-thaw cycles.

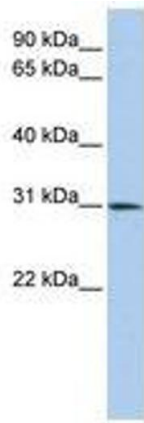


Image 1.