

Datasheet for ABIN6737702  
**anti-PBXIP1 antibody (AA 182-231)**



[Go to Product page](#)

1 Image

Overview

Quantity:	100 µL
Target:	PBXIP1
Binding Specificity:	AA 182-231
Reactivity:	Human, Monkey
Host:	Rabbit
Clonality:	Polyclonal
Conjugate:	This PBXIP1 antibody is un-conjugated
Application:	Western Blotting (WB)

Product Details

Immunogen:	Synthetic peptide located between aa182-231 of human PBXIP1 (Q96AQ6, NP_065385). Percent identity by BLAST analysis: Human, Chimpanzee, Gorilla, Gibbon, Monkey, Marmoset (100%), Hamster, Bovine (91%).  Type of Immunogen: Synthetic peptide
Isotype:	IgG
Specificity:	Human PBXIP1
Predicted Reactivity:	Percent identity by BLAST analysis: Human (100%).
Purification:	Immunoaffinity purified

## Target Details

---

Target:	PBXIP1
Alternative Name:	PBXIP1 / HPIP ( <a href="#">PBXIP1 Products</a> )
Background:	Name/Gene ID: PBXIP1  Synonyms: PBXIP1, HPIP
Gene ID:	57326
NCBI Accession:	<a href="#">NP_065385</a>
UniProt:	<a href="#">Q96AQ6</a>

## Application Details

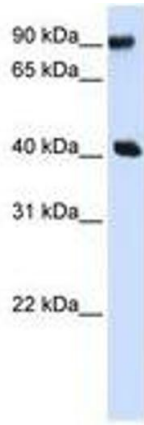
---

Application Notes:	Approved: WB  Usage: ELISA titer using peptide based assay: 1:62500. Western Blot: Suggested dilution at 1 $\mu$ g/mL in 5 % skim milk / PBS buffer, and HRP conjugated anti-Rabbit IgG should be diluted in 1:50000 - 100000 as second antibody.
Comment:	Target Species of Antibody: Human
Restrictions:	For Research Use only

## Handling

---

Format:	Lyophilized
Reconstitution:	Distilled Water.
Concentration:	Lot specific
Buffer:	Lyophilized from PBS with 2 % sucrose
Handling Advice:	Avoid repeat freeze-thaw cycles.
Storage:	4 °C,-20 °C
Storage Comment:	Long term: -20°C, the use of 50% glycerol is recommended if storing aliquots in -20°C for long term use (up to 1 year)  Short term (less than 1 week): 4°C. Avoid freeze-thaw cycles.



**Image 1.**