



[Go to Product page](#)

Datasheet for ABIN6737711
anti-AHCYL1 antibody (AA 72-121)

1 Image

Overview

Quantity:	100 µL
Target:	AHCYL1
Binding Specificity:	AA 72-121
Reactivity:	Human, Mouse, Rat, Cow, Rabbit, Guinea Pig, Horse, Dog, Zebrafish (Danio rerio), Monkey, Chicken, Pig
Host:	Rabbit
Clonality:	Polyclonal
Conjugate:	This AHCYL1 antibody is un-conjugated
Application:	Western Blotting (WB)

Product Details

Immunogen:	Synthetic peptide located between aa72-121 of human AHCYL1 (O43865, NP_006612). Percent identity by BLAST analysis: Human, Chimpanzee, Gorilla, Gibbon, Galago, Marmoset, Mouse, Rat, Elephant, Dog, Bovine, Rabbit, Horse, Pig, Opossum, Guinea pig, Turkey, Zebra finch, Chicken, Platypus, Lizard (100%), Bat (92%). Type of Immunogen: Synthetic peptide
Isotype:	IgG
Specificity:	Human AHCYL1
Predicted Reactivity:	Percent identity by BLAST analysis: Human, Mouse, Rat, Dog, Bovine, Rabbit, Horse, Guinea pig, Chicken (100%).

Product Details

Purification: Immunoaffinity purified

Target Details

Target: AHCYL1

Alternative Name: AHCYL1 / DCAL ([AHCYL1 Products](#))

Background: Name/Gene ID: AHCYL1

Synonyms: AHCYL1, DCAL, Adenosylhomocysteinase-like 1, AdoHcyase 2, PRO0233, XPVKONA, IRBIT

Gene ID: 10768

NCBI Accession: [NP_006612](#)

UniProt: [O43865](#)

Application Details

Application Notes: Approved: WB

Usage: ELISA titer using peptide based assay: 1:32500. Western Blot: Suggested dilution at 1 μ g/mL in 5 % skim milk / PBS buffer, and HRP conjugated anti-Rabbit IgG should be diluted in 1:50000 - 100000 as second antibody.

Comment: Target Species of Antibody: Human

Restrictions: For Research Use only

Handling

Format: Lyophilized

Reconstitution: Distilled Water.

Concentration: Lot specific

Buffer: Lyophilized from PBS with 2 % sucrose

Handling Advice: Avoid repeat freeze-thaw cycles.

Storage: 4 °C, -20 °C

Storage Comment: Long term: -20°C, the use of 50% glycerol is recommended if storing aliquots in -20°C for long

Handling

term use (up to 1 year)

Short term (less than 1 week): 4°C. Avoid freeze-thaw cycles.

Images

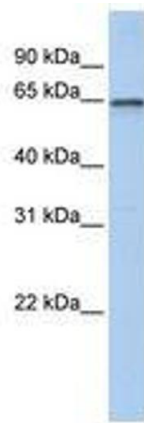


Image 1.