



[Go to Product page](#)

Datasheet for ABIN6737717
anti-MRPS15 antibody (AA 51-100)

2 Images

Overview

Quantity:	100 µL
Target:	MRPS15
Binding Specificity:	AA 51-100
Reactivity:	Human, Mouse, Cow, Guinea Pig, Rabbit, Monkey
Host:	Rabbit
Clonality:	Polyclonal
Conjugate:	This MRPS15 antibody is un-conjugated
Application:	Western Blotting (WB), Immunohistochemistry (IHC), Immunohistochemistry (Paraffin-embedded Sections) (IHC (p))

Product Details

Immunogen:	Synthetic peptide located between aa51-100 of human MRPS15 (P82914, NP_112570). Percent identity by BLAST analysis: Human, Gorilla, Gibbon, Marmoset, Bovine, Guinea pig (100%), Elephant, Dog, Horse (92%), Bat, Rabbit (85%), Platypus (84%), Mouse (83%). Type of Immunogen: Synthetic peptide
Isotype:	IgG
Specificity:	Human MRPS15
Predicted Reactivity:	Percent identity by BLAST analysis: Human, Bovine, Guinea pig (100%) Dog (92%) Rabbit (85%) Mouse (83%).
Purification:	Immunoaffinity purified

Target Details

Target:	MRPS15
Alternative Name:	MRPS15 (MRPS15 Products)
Background:	Name/Gene ID: MRPS15 Synonyms: MRPS15, DC37, RPMS15, S15mt, MPR-S15, MRP-S15
Gene ID:	64960
NCBI Accession:	NP_112570
UniProt:	P82914

Application Details

Application Notes:	Approved: IHC, IHC-P, WB Usage: ELISA titer using peptide based assay: 1:12500. Western Blot: Suggested dilution at 0.5 µg/mL in 5 % skim milk / PBS buffer, and HRP conjugated anti-Rabbit IgG should be diluted in 1:50000 - 100000 as second antibody.
Comment:	Target Species of Antibody: Human
Restrictions:	For Research Use only

Handling

Format:	Lyophilized
Reconstitution:	Distilled Water.
Concentration:	Lot specific
Buffer:	Lyophilized from PBS with 2 % sucrose
Handling Advice:	Avoid repeat freeze-thaw cycles.
Storage:	4 °C, -20 °C
Storage Comment:	Long term: -20°C, the use of 50% glycerol is recommended if storing aliquots in -20°C for long term use (up to 1 year) Short term (less than 1 week): 4°C. Avoid freeze-thaw cycles.

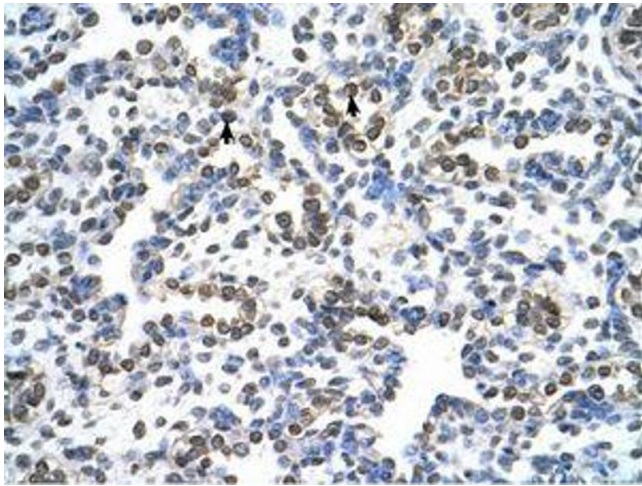


Image 1.



Image 2.