



[Go to Product page](#)

Datasheet for ABIN6737718
anti-TCF7L2 antibody (N-Term)

1 Image

Overview

Quantity:	100 µL
Target:	TCF7L2
Binding Specificity:	N-Term
Reactivity:	Human, Cow, Pig
Host:	Rabbit
Clonality:	Polyclonal
Conjugate:	This TCF7L2 antibody is un-conjugated
Application:	Western Blotting (WB)

Product Details

Immunogen:	Synthetic peptide from N-Terminus of human TCF7L2 (Q6FHW4, NP_110383). Percent identity by BLAST analysis: Human, Chimpanzee, Bovine, Pig (100%), Mouse, Rat, Opossum, Zebrafish (92%), Medaka (91%), Xenopus (85%). Type of Immunogen: Synthetic peptide
Isotype:	IgG
Specificity:	Human TCF7L2
Predicted Reactivity:	Percent identity by BLAST analysis: Human, Bovine, Pig (100%) Mouse, Rat, Zebrafish (92%).
Purification:	Immunoaffinity purified

Target Details

Target:	TCF7L2
Alternative Name:	TCF7L2 / TCG4 (TCF7L2 Products)
Background:	Name/Gene ID: TCF7L2 Family: Transcription factor Synonyms: TCF7L2, HMG box transcription factor 4, HTCF-4, T-cell factor-4 variant X2, T-cell factor 4, Transcription factor 7-like 2, TCF-4
Gene ID:	6934
NCBI Accession:	NP_110383
UniProt:	Q9NQB0
Pathways:	WNT Signaling , Positive Regulation of Peptide Hormone Secretion , Peptide Hormone Metabolism , Regulation of Hormone Metabolic Process , Carbohydrate Homeostasis , Stem Cell Maintenance , Protein targeting to Nucleus

Application Details

Application Notes:	Approved: WB Usage: ELISA titer using peptide based assay: 1:2500. Western Blot: Suggested dilution at 1 µg/mL in 5 % skim milk / PBS buffer, and HRP conjugated anti-Rabbit IgG should be diluted in 1:50000 - 100000 as second antibody.
Comment:	Target Species of Antibody: Human
Restrictions:	For Research Use only

Handling

Format:	Lyophilized
Reconstitution:	Distilled Water.
Concentration:	Lot specific
Buffer:	Lyophilized from PBS with 2 % sucrose
Handling Advice:	Avoid repeat freeze-thaw cycles.
Storage:	4 °C, -20 °C

Handling

Storage Comment: Long term: -20°C, the use of 50% glycerol is recommended if storing aliquots in -20°C for long term use (up to 1 year)
Short term (less than 1 week): 4°C. Avoid freeze-thaw cycles.

Images

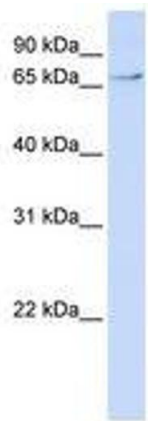


Image 1.