



[Go to Product page](#)

Datasheet for ABIN6737726
anti-ZNF202 antibody (N-Term)

1 Image

Overview

Quantity:	100 µL
Target:	ZNF202
Binding Specificity:	N-Term
Reactivity:	Human, Guinea Pig, Rabbit, Dog, Horse, Monkey, Bat
Host:	Rabbit
Clonality:	Polyclonal
Conjugate:	This ZNF202 antibody is un-conjugated
Application:	Western Blotting (WB)

Product Details

Immunogen:	Synthetic peptide from N-Terminus of human ZNF202 (O95125, NP_003446). Percent identity by BLAST analysis: Human, Chimpanzee, Gorilla, Gibbon, Monkey, Galago, Marmoset, Panda, Dog, Bat, Rabbit, Horse, Guinea pig (100%), Elephant, Bovine, Pig (92%), Rat (85%), Opossum (83%), Mouse (78%). Type of Immunogen: Synthetic peptide
Isotype:	IgG
Specificity:	Human ZNF202
Predicted Reactivity:	Percent identity by BLAST analysis: Human, Dog, Rabbit, Horse, Guinea pig (100%) Bovine (92%).
Purification:	Immunoaffinity purified

Target Details

Target:	ZNF202
Alternative Name:	ZNF202 (ZNF202 Products)
Background:	Name/Gene ID: ZNF202 Family: Zinc Finger Synonyms: ZNF202, Zinc finger protein 202, ZKSCAN10, ZSCAN42
Gene ID:	7753
NCBI Accession:	NP_003446
UniProt:	O95125

Application Details

Application Notes:	Approved: WB Usage: ELISA titer using peptide based assay: 1:312500. Western Blot: Suggested dilution at 1 μ g/mL in 5 % skim milk / PBS buffer, and HRP conjugated anti-Rabbit IgG should be diluted in 1:50000 - 100000 as second antibody.
Comment:	Target Species of Antibody: Human
Restrictions:	For Research Use only

Handling

Format:	Lyophilized
Reconstitution:	Distilled Water.
Concentration:	Lot specific
Buffer:	Lyophilized from PBS with 2 % sucrose
Handling Advice:	Avoid repeat freeze-thaw cycles.
Storage:	4 °C,-20 °C
Storage Comment:	Long term: -20°C, the use of 50% glycerol is recommended if storing aliquots in -20°C for long term use (up to 1 year) Short term (less than 1 week): 4°C. Avoid freeze-thaw cycles.

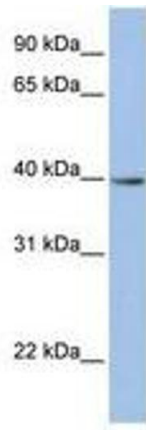


Image 1.