



[Go to Product page](#)

Datasheet for ABIN6737729

anti-Claudin 5 antibody (C-Term)

1 Image

Overview

| | |
|----------------------|--|
| Quantity: | 100 µL |
| Target: | Claudin 5 (CLDN5) |
| Binding Specificity: | C-Term |
| Reactivity: | Human, Pig, Dog, Monkey |
| Host: | Rabbit |
| Clonality: | Polyclonal |
| Conjugate: | This Claudin 5 antibody is un-conjugated |
| Application: | Western Blotting (WB) |

Product Details

| | |
|-----------------------|---|
| Immunogen: | Synthetic peptide from C-Terminus of human CLDN5 (O00501, NP_003268). Percent identity by BLAST analysis: Human, Chimpanzee, Gorilla, Gibbon, Monkey, Dog, Pig (100%), Galago, Mouse, Bovine, Rabbit (92%), Rat, Bat, Guinea pig (85%), Elephant (84%). Type of Immunogen: Synthetic peptide |
| Isotype: | IgG |
| Specificity: | Human CLDN5 / Claudin 5 |
| Predicted Reactivity: | Percent identity by BLAST analysis: Human, Dog, Pig (100%). |
| Purification: | Immunoaffinity purified |

Target Details

| | |
|-------------------|---|
| Target: | Claudin 5 (CLDN5) |
| Alternative Name: | CLDN5 / Claudin 5 (CLDN5 Products) |
| Background: | Name/Gene ID: CLDN5 Family: Claudin Synonyms: CLDN5, BEC1, AWAL, Claudin-5, CPETRL1, TMDVCF, TMVCF, Claudin 5 |
| Gene ID: | 7122 |
| NCBI Accession: | NP_003268 |
| UniProt: | O00501 |
| Pathways: | Hepatitis C |

Application Details

| | |
|--------------------|---|
| Application Notes: | Approved: WB Usage: ELISA titer using peptide based assay: 1:62500. Western Blot: Suggested dilution at 1 μ g/mL in 5 % skim milk / PBS buffer, and HRP conjugated anti-Rabbit IgG should be diluted in 1:50000 - 100000 as second antibody. |
| Comment: | Target Species of Antibody: Human |
| Restrictions: | For Research Use only |

Handling

| | |
|------------------|---|
| Format: | Lyophilized |
| Reconstitution: | Distilled Water. |
| Concentration: | Lot specific |
| Buffer: | Lyophilized from PBS with 2 % sucrose |
| Handling Advice: | Avoid repeat freeze-thaw cycles. |
| Storage: | 4 °C, -20 °C |
| Storage Comment: | Long term: -20°C, the use of 50% glycerol is recommended if storing aliquots in -20°C for long term use (up to 1 year) Short term (less than 1 week): 4°C. Avoid freeze-thaw cycles. |

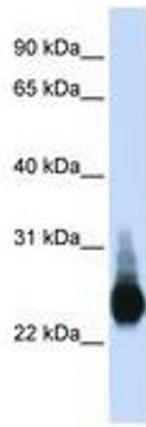


Image 1.