

Datasheet for ABIN6737734
anti-CIR1 antibody (AA 177-226)



[Go to Product page](#)

1 Image

Overview

Quantity:	100 µL
Target:	CIR1
Binding Specificity:	AA 177-226
Reactivity:	Human, Cow, Horse, Mouse, Pig, Rabbit, Rat, Bat, Dog, Hamster, Guinea Pig, Monkey
Host:	Rabbit
Clonality:	Polyclonal
Conjugate:	This CIR1 antibody is un-conjugated
Application:	Western Blotting (WB)

Product Details

Immunogen:	Synthetic peptide located between aa177-226 of human CIR1 (Q86X95). Percent identity by BLAST analysis: Human, Chimpanzee, Monkey, Galago, Marmoset, Mouse, Rat, Hamster, Elephant, Dog, Bovine, Bat, Rabbit, Horse, Pig, Opossum, Guinea pig, Zebra finch, Platypus, Stickleback (100%), Xenopus (92%), Turkey, Chicken (84%). Type of Immunogen: Synthetic peptide
Isotype:	IgG
Specificity:	Human CIR1 / CIR
Predicted Reactivity:	Percent identity by BLAST analysis: Human, Mouse, Rat, Dog, Bovine, Horse, Guinea pig (100%) Chicken (84%).
Purification:	Immunoaffinity purified

Target Details

Target:	CIR1
Alternative Name:	CIR / CIR1 (CIR1 Products)
Background:	Name/Gene ID: CIR1 Synonyms: CIR1, CBF1 interacting corepressor, CBF1-interacting corepressor, CIR, Recepin
Gene ID:	9541
UniProt:	Q86X95

Application Details

Application Notes:	Approved: WB Usage: ELISA titer using peptide based assay: 1:62500. Western Blot: Suggested dilution at 1 µg/mL in 5 % skim milk / PBS buffer, and HRP conjugated anti-Rabbit IgG should be diluted in 1:50000 - 100000 as second antibody.
Comment:	Target Species of Antibody: Human
Restrictions:	For Research Use only

Handling

Format:	Lyophilized
Reconstitution:	Distilled Water.
Concentration:	Lot specific
Buffer:	Lyophilized from PBS with 2 % sucrose
Handling Advice:	Avoid repeat freeze-thaw cycles.
Storage:	4 °C, -20 °C
Storage Comment:	Long term: -20°C, the use of 50% glycerol is recommended if storing aliquots in -20°C for long term use (up to 1 year) Short term (less than 1 week): 4°C. Avoid freeze-thaw cycles.

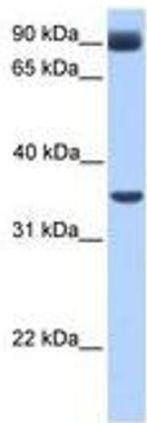


Image 1.