



[Go to Product page](#)

Datasheet for ABIN6737742

anti-Retinoid X Receptor alpha antibody (AA 38-87)

1 Image

Overview

Quantity:	100 µL
Target:	Retinoid X Receptor alpha (RXRA)
Binding Specificity:	AA 38-87
Reactivity:	Human, Mouse, Rat, Guinea Pig, Dog, Horse, Monkey, Pig, Bat
Host:	Rabbit
Clonality:	Polyclonal
Conjugate:	This Retinoid X Receptor alpha antibody is un-conjugated
Application:	Western Blotting (WB)

Product Details

Immunogen:	Synthetic peptide located between aa38-87 of human RXRA (P19793, NP_002948). Percent identity by BLAST analysis: Human, Chimpanzee, Gorilla, Monkey, Marmoset, Mouse, Rat, Elephant, Bat, Horse, Guinea pig (100%), Opossum (91%). Type of Immunogen: Synthetic peptide
Isotype:	IgG
Specificity:	Human RXRA
Predicted Reactivity:	Percent identity by BLAST analysis: Human, Rat, Guinea pig (100%).
Purification:	Immunoaffinity purified

Target Details

Target:	Retinoid X Receptor alpha (RXRA)
Alternative Name:	RXTA / RXR-alpha (RXRA Products)
Background:	Name/Gene ID: RXRA Subfamily: NR2 Hepatocyte NF4-like Family: NHR Synonyms: RXRA, RXR-alpha, NR2B1, Retinoid X receptor alpha, Retinoid X receptor, alpha
Gene ID:	6256
NCBI Accession:	NP_002948
UniProt:	P19793
Pathways:	Nuclear Receptor Transcription Pathway , Retinoic Acid Receptor Signaling Pathway , Steroid Hormone Mediated Signaling Pathway , Regulation of Lipid Metabolism by PPARalpha , Hepatitis C

Application Details

Application Notes:	Approved: WB Usage: ELISA titer using peptide based assay: 1:312500. Western Blot: Suggested dilution at 1 µg/mL in 5 % skim milk / PBS buffer, and HRP conjugated anti-Rabbit IgG should be diluted in 1:50000 - 100000 as second antibody. Not recommended for: IHC-P
Comment:	Target Species of Antibody: Human
Restrictions:	For Research Use only

Handling

Format:	Lyophilized
Reconstitution:	Distilled Water.
Concentration:	Lot specific
Buffer:	Lyophilized from PBS with 2 % sucrose
Handling Advice:	Avoid repeat freeze-thaw cycles.

Handling

Storage: 4 °C, -20 °C

Storage Comment: Long term: -20°C, the use of 50% glycerol is recommended if storing aliquots in -20°C for long term use (up to 1 year)
Short term (less than 1 week): 4°C. Avoid freeze-thaw cycles.

Images

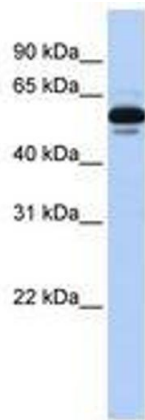


Image 1.