



Datasheet for ABIN6737775 **anti-POLR2I antibody (AA 38-87)**



[Go to Product page](#)

1 Image

Overview

Quantity:	100 µL
Target:	POLR2I
Binding Specificity:	AA 38-87
Reactivity:	Human, Mouse, Rat, Dog, Rabbit, Cow, Guinea Pig, Horse, Pig, Monkey, Bat
Host:	Rabbit
Clonality:	Polyclonal
Conjugate:	This POLR2I antibody is un-conjugated
Application:	Western Blotting (WB)

Product Details

Immunogen:	Synthetic peptide located between aa38-87 of human POLR2I (P36954, NP_006224). Percent identity by BLAST analysis: Human, Chimpanzee, Gorilla, Gibbon, Monkey, Galago, Marmoset, Mouse, Rat, Elephant, Panda, Dog, Bovine, Bat, Rabbit, Horse, Pig, Opossum, Guinea pig, Turkey, Zebra finch, Trout, Catfish, Stickleback (100%), Zebrafish (92%), Xenopus (85%). Type of Immunogen: Synthetic peptide
Isotype:	IgG
Specificity:	Human POLR2I
Predicted Reactivity:	Percent identity by BLAST analysis: Mouse, Rat, Dog, Bovine (100%) Zebrafish (92%) Xenopus (85%).
Purification:	Immunoaffinity purified

Target Details

Target:	POLR2I
Alternative Name:	POLR2I (POLR2I Products)
Background:	Name/Gene ID: POLR2I Synonyms: POLR2I, HRPB14.5, RNA polymerase II subunit B9, RPB14.5, RPB9
Gene ID:	5438
NCBI Accession:	NP_006224
UniProt:	P36954
Pathways:	Regulatory RNA Pathways

Application Details

Application Notes:	Approved: WB Usage: ELISA titer using peptide based assay: 1:312500. Western Blot: Suggested dilution at 1 µg/mL in 5 % skim milk / PBS buffer, and HRP conjugated anti-Rabbit IgG should be diluted in 1:50000 - 100000 as second antibody.
Comment:	Target Species of Antibody: Human
Restrictions:	For Research Use only

Handling

Format:	Lyophilized
Reconstitution:	Distilled Water.
Concentration:	Lot specific
Buffer:	Lyophilized from PBS with 2 % sucrose
Handling Advice:	Avoid repeat freeze-thaw cycles.
Storage:	4 °C,-20 °C
Storage Comment:	Long term: -20°C, the use of 50% glycerol is recommended if storing aliquots in -20°C for long term use (up to 1 year) Short term (less than 1 week): 4°C. Avoid freeze-thaw cycles.

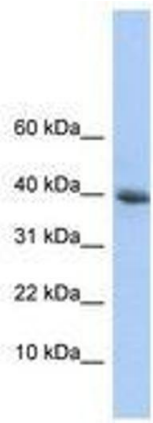


Image 1.