



[Go to Product page](#)

Datasheet for ABIN6737780
anti-PHF20 antibody (AA 861-910)

1 Image

Overview

| | |
|----------------------|--------------------------------------|
| Quantity: | 100 µL |
| Target: | PHF20 |
| Binding Specificity: | AA 861-910 |
| Reactivity: | Human |
| Host: | Rabbit |
| Clonality: | Polyclonal |
| Conjugate: | This PHF20 antibody is un-conjugated |
| Application: | Western Blotting (WB) |

Product Details

| | |
|-----------------------|--|
| Immunogen: | Synthetic peptide located between aa861-910 of human PHF20 (Q9BVI0). Percent identity by BLAST analysis: Human (100%), Gorilla, Gibbon (92%), Marmoset, Elephant, Bovine, Bat, Rabbit (91%). Type of Immunogen: Synthetic peptide |
| Isotype: | IgG |
| Specificity: | Human PHF20 |
| Predicted Reactivity: | Percent identity by BLAST analysis: Human (100%) Bovine, Rabbit (91%). |
| Purification: | Immunoaffinity purified |

Target Details

| | |
|-------------------|--|
| Target: | PHF20 |
| Alternative Name: | PHF20 (PHF20 Products) |
| Background: | Name/Gene ID: PHF20 Synonyms: PHF20, C20orf104, DJ1121G12.1, GLEA2, Novel zinc finger protein, PHD finger protein 20, Transcription factor TZP, NZF, TZP, Glioma-expressed antigen 2, HCA58 |
| Gene ID: | 51230 |
| UniProt: | Q9BVI0 |

Application Details

| | |
|--------------------|---|
| Application Notes: | Approved: WB (0.2 - 1 µg/mL) Usage: Western Blot: Suggested dilution at 0.25 µg/mL in 5 % skim milk / PBS buffer, and HRP conjugated anti-Rabbit IgG should be diluted in 1:50000 - 100000 as second antibody. |
| Comment: | Target Species of Antibody: Human |
| Restrictions: | For Research Use only |

Handling

| | |
|------------------|---|
| Format: | Lyophilized |
| Reconstitution: | Distilled Water. |
| Concentration: | Lot specific |
| Buffer: | Lyophilized from PBS with 2 % sucrose |
| Handling Advice: | Avoid repeat freeze-thaw cycles. |
| Storage: | 4 °C, -20 °C |
| Storage Comment: | Long term: -20°C, the use of 50% glycerol is recommended if storing aliquots in -20°C for long term use (up to 1 year) Short term (less than 1 week): 4°C. Avoid freeze-thaw cycles. |

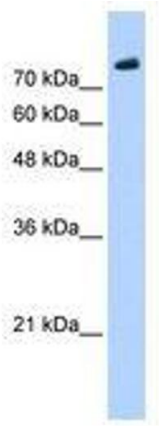


Image 1.