



[Go to Product page](#)

Datasheet for ABIN6737786
anti-NR0B2 antibody (AA 146-195)

1 Image

Overview

Quantity:	100 µL
Target:	NR0B2
Binding Specificity:	AA 146-195
Reactivity:	Human, Dog, Horse, Cow, Monkey
Host:	Rabbit
Clonality:	Polyclonal
Conjugate:	This NR0B2 antibody is un-conjugated
Application:	Western Blotting (WB)

Product Details

Immunogen:	Synthetic peptide located between aa146-195 of human NR0B2 (Q15466, NP_068804). Percent identity by BLAST analysis: Human, Chimpanzee, Gorilla, Orangutan, Gibbon, Monkey (100%), Galago, Rabbit (92%), Bovine, Horse, Pig (85%), Dog (84%). Type of Immunogen: Synthetic peptide
Isotype:	IgG
Specificity:	Human NR0B2
Predicted Reactivity:	Percent identity by BLAST analysis: Human (100%) Bovine, Horse (85%) Dog (84%).
Purification:	Immunoaffinity purified

Target Details

Target:	NR0B2
Alternative Name:	NR0B2 / SHP (NR0B2 Products)
Background:	Name/Gene ID: NR0B2 Subfamily: NR0 Knirps-like Family: NHR Synonyms: NR0B2, Short heterodimer partner, SHP, Nuclear receptor SHP, Orphan nuclear receptor SHP, Small heterodimer partner, SHP1
Gene ID:	8431
NCBI Accession:	NP_068804
UniProt:	Q15466
Pathways:	Nuclear Receptor Transcription Pathway , Positive Regulation of Peptide Hormone Secretion , Intracellular Steroid Hormone Receptor Signaling Pathway , Steroid Hormone Mediated Signaling Pathway

Application Details

Application Notes:	Approved: WB Usage: ELISA titer using peptide based assay: 1:312500. Western Blot: Suggested dilution at 1 µg/mL in 5 % skim milk / PBS buffer, and HRP conjugated anti-Rabbit IgG should be diluted in 1:50000 - 100000 as second antibody.
Comment:	Target Species of Antibody: Human
Restrictions:	For Research Use only

Handling

Format:	Lyophilized
Reconstitution:	Distilled Water.
Concentration:	Lot specific
Buffer:	Lyophilized from PBS with 2 % sucrose
Handling Advice:	Avoid repeat freeze-thaw cycles.

Handling

Storage: 4 °C, -20 °C

Storage Comment: Long term: -20°C, the use of 50% glycerol is recommended if storing aliquots in -20°C for long term use (up to 1 year)
Short term (less than 1 week): 4°C. Avoid freeze-thaw cycles.

Images

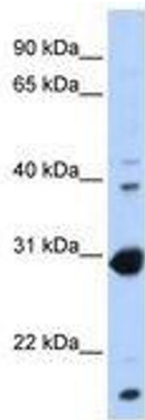


Image 1.