



[Go to Product page](#)

Datasheet for ABIN6737799
anti-INTS6 antibody (AA 756-805)

1 Image

Overview

Quantity:	100 µL
Target:	INTS6
Binding Specificity:	AA 756-805
Reactivity:	Human, Rabbit, Cow, Horse, Pig, Monkey
Host:	Rabbit
Clonality:	Polyclonal
Conjugate:	This INTS6 antibody is un-conjugated
Application:	Western Blotting (WB)

Product Details

Immunogen:	Synthetic peptide located between aa756-805 of human INTS6 (NP_001035026). Percent identity by BLAST analysis: Human, Chimpanzee, Gorilla, Gibbon, Monkey, Marmoset, Elephant, Bovine, Rabbit, Horse, Pig, Opossum (100%), Galago, Mouse, Panda, Dog, Bat, Platypus (92%). Type of Immunogen: Synthetic peptide
Isotype:	IgG
Specificity:	Human INTS6
Predicted Reactivity:	Percent identity by BLAST analysis: Human, Bovine, Rabbit, Horse, Pig (100%) Dog (92%).
Purification:	Immunoaffinity purified

Target Details

Target:	INTS6
Alternative Name:	INTS6 (INTS6 Products)
Background:	Name/Gene ID: INTS6 Synonyms: INTS6, DBI-1, DBI1, DDX26A, HDB, Integrator complex subunit 6, Notch12, INT6, Protein deleted in cancer 1, RNA helicase HDB, Protein DDX26, DDX26, DEAD box protein, DICE1
Gene ID:	26512
NCBI Accession:	NP_001035026
UniProt:	Q9UL03

Application Details

Application Notes:	Approved: WB Usage: ELISA titer using peptide based assay: 1:62500. Western Blot: Suggested dilution at 1 μ g/mL in 5 % skim milk / PBS buffer, and HRP conjugated anti-Rabbit IgG should be diluted in 1:50000 - 100000 as second antibody.
Comment:	Target Species of Antibody: Human
Restrictions:	For Research Use only

Handling

Format:	Lyophilized
Reconstitution:	Distilled Water.
Concentration:	Lot specific
Buffer:	Lyophilized from PBS with 2 % sucrose
Handling Advice:	Avoid repeat freeze-thaw cycles.
Storage:	4 °C,-20 °C
Storage Comment:	Long term: -20°C, the use of 50% glycerol is recommended if storing aliquots in -20°C for long term use (up to 1 year) Short term (less than 1 week): 4°C. Avoid freeze-thaw cycles.

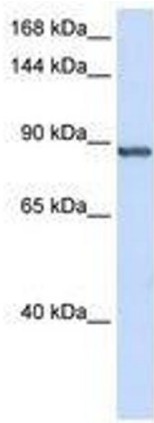


Image 1.