

Datasheet for ABIN6737803
anti-IFT140 antibody (AA 108-157)



[Go to Product page](#)

1 Image

Overview

Quantity:	100 µL
Target:	IFT140
Binding Specificity:	AA 108-157
Reactivity:	Human, Mouse, Rat, Guinea Pig, Horse, Bat, Hamster
Host:	Rabbit
Clonality:	Polyclonal
Conjugate:	This IFT140 antibody is un-conjugated
Application:	Western Blotting (WB)

Product Details

Immunogen:	Synthetic peptide located between aa108-157 of human IFT140 (Q96RY7, NP_055529). Percent identity by BLAST analysis: Human, Gorilla, Monkey, Galago, Mouse, Rat, Hamster, Bat, Horse, Opossum, Guinea pig, Platypus (100%), Gibbon, Marmoset, Bovine, Rabbit, Pig (92%), Turkey (84%). Type of Immunogen: Synthetic peptide
Isotype:	IgG
Specificity:	Human IFT140
Predicted Reactivity:	Percent identity by BLAST analysis: Mouse, Horse, Guinea pig (100%) Bovine, Rabbit, Pig (92%).
Purification:	Immunoaffinity purified

Target Details

Target: IFT140

Alternative Name: IFT140 ([IFT140 Products](#))

Background: Name/Gene ID: IFT140

Synonyms: IFT140, C305C8.4, Gs114, WDTC2, C380F5.1, KIAA0590, MZSDS

Gene ID: 9742

NCBI Accession: [NP_055529](#)

UniProt: [Q96RY7](#)

Pathways: [Hedgehog Signaling](#)

Application Details

Application Notes: Approved: WB

Usage: ELISA titer using peptide based assay: 1:62500. Western Blot: Suggested dilution at 1 μ g/mL in 5 % skim milk / PBS buffer, and HRP conjugated anti-Rabbit IgG should be diluted in 1:50000 - 100000 as second antibody.

Comment: Target Species of Antibody: Human

Restrictions: For Research Use only

Handling

Format: Lyophilized

Reconstitution: Distilled Water.

Concentration: Lot specific

Buffer: Lyophilized from PBS with 2 % sucrose

Handling Advice: Avoid repeat freeze-thaw cycles.

Storage: 4 °C,-20 °C

Storage Comment: Long term: -20°C, the use of 50% glycerol is recommended if storing aliquots in -20°C for long term use (up to 1 year)

Short term (less than 1 week): 4°C. Avoid freeze-thaw cycles.

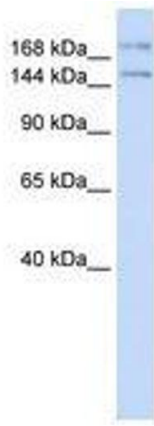


Image 1.