

Datasheet for ABIN6737804
anti-MCM8 antibody (AA 717-766)[Go to Product page](#)

2 Images

Overview

Quantity:	100 µL
Target:	MCM8
Binding Specificity:	AA 717-766
Reactivity:	Human, Rat, Mouse, Cow, Horse, Rabbit, Guinea Pig, Pig, Bat, Hamster, Monkey
Host:	Rabbit
Clonality:	Polyclonal
Conjugate:	This MCM8 antibody is un-conjugated
Application:	Western Blotting (WB), Immunohistochemistry (IHC), Immunohistochemistry (Paraffin-embedded Sections) (IHC (p))

Product Details

Immunogen:	Synthetic peptide located between aa717-766 of human MCM8 (Q9UJA3, NP_115874). Percent identity by BLAST analysis: Human, Chimpanzee, Gorilla, Gibbon, Monkey, Galago, Marmoset, Mouse, Rat, Hamster, Elephant, Panda, Bovine, Bat, Rabbit, Horse, Pig, Guinea pig (100%), Dog, Opossum, Turkey, Zebra finch, Chicken, Platypus, Lizard (92%), Stickleback, Zebrafish (85%). Type of Immunogen: Synthetic peptide
Isotype:	IgG
Specificity:	Human MCM8
Predicted Reactivity:	Percent identity by BLAST analysis: Human, Mouse, Rat, Bovine, Rabbit, Horse, Pig (100%) Dog, Chicken (92%).

Product Details

Purification: Immunoaffinity purified

Target Details

Target: MCM8

Alternative Name: MCM8 / REC ([MCM8 Products](#))

Background: Name/Gene ID: MCM8

Synonyms: MCM8, C20orf154, Minichromosome maintenance 8, REC homolog, DJ967N21.5, Rec

Gene ID: 84515

NCBI Accession: [NP_115874](#)

UniProt: [Q9UJA3](#)

Pathways: [Mitotic G1-G1/S Phases](#), [DNA Replication](#), [Synthesis of DNA](#)

Application Details

Application Notes: Approved: IHC, IHC-P, WB

Usage: ELISA titer using peptide based assay: 1:1562500. Western Blot: Suggested dilution at 0.5 µg/mL in 5 % skim milk / PBS buffer, and HRP conjugated anti-Rabbit IgG should be diluted in 1:50000 - 100000 as second antibody.

Comment: Target Species of Antibody: Human

Restrictions: For Research Use only

Handling

Format: Lyophilized

Reconstitution: Distilled Water.

Concentration: Lot specific

Buffer: Lyophilized from PBS with 2 % sucrose

Handling Advice: Avoid repeat freeze-thaw cycles.

Storage: 4 °C, -20 °C

Handling

Storage Comment: Long term: -20°C, the use of 50% glycerol is recommended if storing aliquots in -20°C for long term use (up to 1 year)

Short term (less than 1 week): 4°C. Avoid freeze-thaw cycles.

Images

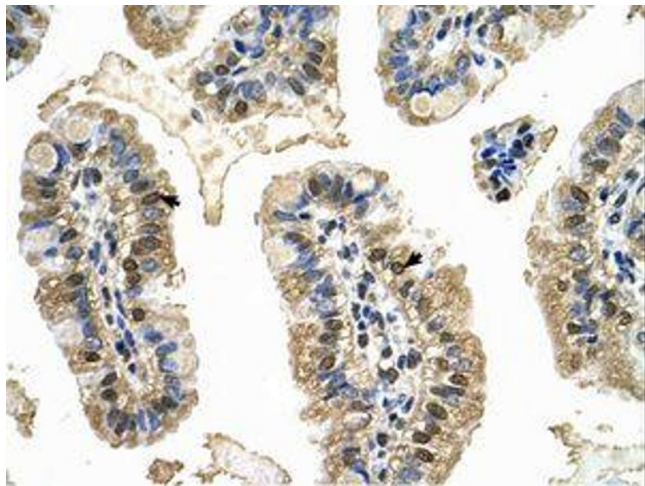


Image 1.

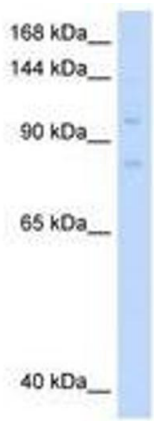


Image 2.