



[Go to Product page](#)

Datasheet for ABIN6737818
anti-IRF4 antibody (N-Term)

2 Images

Overview

Quantity:	100 µL
Target:	IRF4
Binding Specificity:	N-Term
Reactivity:	Human, Mouse, Rat, Guinea Pig, Horse, Zebrafish (Danio rerio), Cow, Pig, Xenopus laevis, Bat, Monkey
Host:	Rabbit
Clonality:	Polyclonal
Conjugate:	This IRF4 antibody is un-conjugated
Application:	Western Blotting (WB), Immunohistochemistry (IHC), Immunohistochemistry (Paraffin-embedded Sections) (IHC (p))

Product Details

Immunogen:	Synthetic peptide from N-Terminus of human IRF4 (Q15306, NP_002451). Percent identity by BLAST analysis: Human, Chimpanzee, Gorilla, Gibbon, Monkey, Galago, Marmoset, Mouse, Rat, Elephant, Panda, Bovine, Bat, Horse, Pig, Opossum, Guinea pig, Xenopus (100%), Dog, Rabbit, Turkey, Zebra finch, Chicken, Salmon (92%), Stickleback (90%), Zebrafish (85%). Type of Immunogen: Synthetic peptide
Isotype:	IgG
Specificity:	Human IRF4
Predicted Reactivity:	Percent identity by BLAST analysis: Human, Mouse, Rat, Bovine, Horse, Pig, Guinea pig (100%)

Product Details

Dog, Rabbit, Chicken (92%) Zebrafish (85%).

Purification: Immunoaffinity purified

Target Details

Target: IRF4

Alternative Name: IRF4 / IRF-4 ([IRF4 Products](#))

Background: Name/Gene ID: IRF4

Synonyms: IRF4, Interferon regulatory factor 4, NF-EM5, LSIRF, IRF-4, Multiple myeloma oncogene 1

Gene ID: 3662

NCBI Accession: [NP_002451](#)

UniProt: [Q15306](#)

Pathways: [Chromatin Binding](#)

Application Details

Application Notes: Approved: IHC, IHC-P, WB

Usage: ELISA titer using peptide based assay: 1:312500. Western Blot: Suggested dilution at 0.5 µg/mL in 5 % skim milk / PBS buffer, and HRP conjugated anti-Rabbit IgG should be diluted in 1:50000 - 100000 as second antibody.

Comment: Target Species of Antibody: Human

Restrictions: For Research Use only

Handling

Format: Lyophilized

Reconstitution: Distilled Water.

Concentration: Lot specific

Buffer: Lyophilized from PBS with 2 % sucrose

Handling Advice: Avoid repeat freeze-thaw cycles.

Handling

Storage: 4 °C, -20 °C

Storage Comment: Long term: -20°C, the use of 50% glycerol is recommended if storing aliquots in -20°C for long term use (up to 1 year)

Short term (less than 1 week): 4°C. Avoid freeze-thaw cycles.

Images

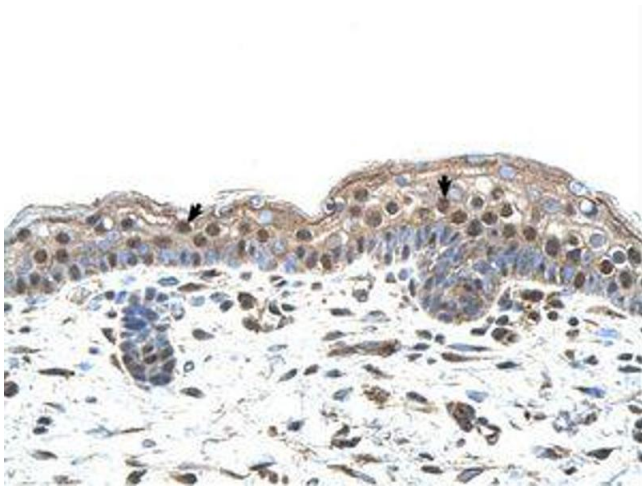


Image 1.

Image 2.