



[Go to Product page](#)

Datasheet for ABIN6737829  
**anti-TULP3 antibody (AA 36-85)**

1 Image

Overview

Quantity:	100 µL
Target:	TULP3
Binding Specificity:	AA 36-85
Reactivity:	Human, Mouse, Rat, Dog, Rabbit, Cow, Horse, Guinea Pig, Monkey
Host:	Rabbit
Clonality:	Polyclonal
Conjugate:	This TULP3 antibody is un-conjugated
Application:	Western Blotting (WB)

Product Details

Immunogen:	Synthetic peptide located between aa36-85 of human TULP3 (O75386, NP_003315). Percent identity by BLAST analysis: Human, Chimpanzee, Gorilla, Gibbon, Monkey, Marmoset (100%), Galago, Mouse, Rat, Elephant, Panda, Dog, Bovine, Bat, Rabbit, Horse, Pig, Opossum, Guinea pig, Platypus (85%).  Type of Immunogen: Synthetic peptide
Isotype:	IgG
Specificity:	Human TULP3
Predicted Reactivity:	Percent identity by BLAST analysis: Human (100%) Mouse, Rat, Dog, Bovine, Rabbit, Horse, Guinea pig (85%).
Purification:	Immunoaffinity purified

## Target Details

---

Target:	TULP3
Alternative Name:	TULP3 ( <a href="#">TULP3 Products</a> )
Background:	Name/Gene ID: TULP3  Synonyms: TULP3, Tubby-related protein 3, TUBL3, Tubby like protein 3, Tubby-like protein 3
Gene ID:	7289
NCBI Accession:	<a href="#">NP_003315</a>
UniProt:	<a href="#">O75386</a>
Pathways:	<a href="#">Regulation of G-Protein Coupled Receptor Protein Signaling, Tube Formation</a>

## Application Details

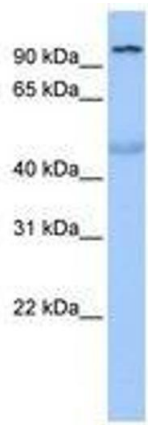
---

Application Notes:	Approved: WB  Usage: ELISA titer using peptide based assay: 1:1562500. Western Blot: Suggested dilution at 1 µg/mL in 5 % skim milk / PBS buffer, and HRP conjugated anti-Rabbit IgG should be diluted in 1:50000 - 100000 as second antibody.
Comment:	Target Species of Antibody: Human
Restrictions:	For Research Use only

## Handling

---

Format:	Lyophilized
Reconstitution:	Distilled Water.
Concentration:	Lot specific
Buffer:	Lyophilized from PBS with 2 % sucrose
Handling Advice:	Avoid repeat freeze-thaw cycles.
Storage:	4 °C,-20 °C
Storage Comment:	Long term: -20°C, the use of 50% glycerol is recommended if storing aliquots in -20°C for long term use (up to 1 year)  Short term (less than 1 week): 4°C. Avoid freeze-thaw cycles.



**Image 1.**