



[Go to Product page](#)

Datasheet for ABIN6737841
anti-XBP1 antibody (C-Term)

1 Image

Overview

Quantity:	100 µL
Target:	XBP1
Binding Specificity:	C-Term
Reactivity:	Human, Cow, Rabbit, Pig, Dog, Monkey
Host:	Rabbit
Clonality:	Polyclonal
Conjugate:	This XBP1 antibody is un-conjugated
Application:	Western Blotting (WB)

Product Details

Immunogen:	Synthetic peptide from C-Terminus of human XBP1 (P17861, NP_005071). Percent identity by BLAST analysis: Human, Monkey (100%), Elephant (92%), Mouse, Rat (90%), Dog, Rabbit, Pig (85%), Horse (84%), Bovine (83%). Type of Immunogen: Synthetic peptide
Isotype:	IgG
Specificity:	Human XBP1
Predicted Reactivity:	Percent identity by BLAST analysis: Human (100%) Mouse, Rat (90%) Dog, Rabbit, Pig (85%).
Purification:	Immunoaffinity purified

Target Details

Target:	XBP1
Alternative Name:	XBP1 (XBP1 Products)
Background:	Name/Gene ID: XBP1 Synonyms: XBP1, X-box binding protein 1, X-box-binding protein 1, XBP2, TREB5, XBP-1
Gene ID:	7494
NCBI Accession:	NP_005071
UniProt:	P17861
Pathways:	ER-Nucleus Signaling , Unfolded Protein Response

Application Details

Application Notes:	Approved: WB Usage: ELISA titer using peptide based assay: 1:1562500. Western Blot: Suggested dilution at 1.0 µg/mL in 5 % skim milk / PBS buffer, and HRP conjugated anti-Rabbit IgG should be diluted in 1:50000 - 100000 as second antibody.
Comment:	Target Species of Antibody: Human
Restrictions:	For Research Use only

Handling

Format:	Lyophilized
Reconstitution:	Distilled Water.
Concentration:	Lot specific
Buffer:	Lyophilized from PBS with 2 % sucrose
Handling Advice:	Avoid repeat freeze-thaw cycles.
Storage:	4 °C,-20 °C
Storage Comment:	Long term: -20°C, the use of 50% glycerol is recommended if storing aliquots in -20°C for long term use (up to 1 year) Short term (less than 1 week): 4°C. Avoid freeze-thaw cycles.

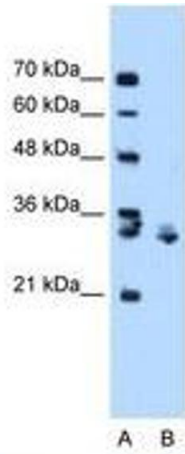


Image 1.