



Datasheet for ABIN6737849  
**anti-CITED2 antibody (N-Term)**



[Go to Product page](#)

1 Image

Overview

Quantity:	100 µL
Target:	CITED2
Binding Specificity:	N-Term
Reactivity:	Human, Mouse, Rat, Cow, Pig, Monkey
Host:	Rabbit
Clonality:	Polyclonal
Conjugate:	This CITED2 antibody is un-conjugated
Application:	Western Blotting (WB)

Product Details

Immunogen:	Synthetic peptide from N-Terminus of human CITED2 (Q99967, NP_006070). Percent identity by BLAST analysis: Human, Chimpanzee, Gorilla, Orangutan, Gibbon, Monkey, Galago, Tamarin, Mouse, Rat, Elephant, Bovine, Pig, Opossum (100%), Guinea pig (92%), Zebra finch, Chicken, Xenopus (85%).  Type of Immunogen: Synthetic peptide
Isotype:	IgG
Specificity:	Human CITED2
Predicted Reactivity:	Percent identity by BLAST analysis: Human, Mouse, Rat (100%) Chicken (85%).
Purification:	Immunoaffinity purified

## Target Details

---

Target:	CITED2
Alternative Name:	CITED2 ( <a href="#">CITED2 Products</a> )
Background:	Name/Gene ID: CITED2  Synonyms: CITED2, MRG1, MRG-1, MSG-related protein 1, ASD8, VSD2, MSG1-related gene 1, p35SRJ
Gene ID:	10370
NCBI Accession:	<a href="#">NP_006070</a>
UniProt:	<a href="#">Q99967</a>
Pathways:	<a href="#">Tube Formation</a>

## Application Details

---

Application Notes:	Approved: WB  Usage: ELISA titer using peptide based assay: 1:1562500. Western Blot: Suggested dilution at 1 µg/mL in 5 % skim milk / PBS buffer, and HRP conjugated anti-Rabbit IgG should be diluted in 1:50000 - 100000 as second antibody.  Not recommended for: IHC-P
Comment:	Target Species of Antibody: Human
Restrictions:	For Research Use only

## Handling

---

Format:	Lyophilized
Reconstitution:	Distilled Water.
Concentration:	Lot specific
Buffer:	Lyophilized from PBS with 2 % sucrose
Handling Advice:	Avoid repeat freeze-thaw cycles.
Storage:	4 °C,-20 °C
Storage Comment:	Long term: -20°C, the use of 50% glycerol is recommended if storing aliquots in -20°C for long

## Handling

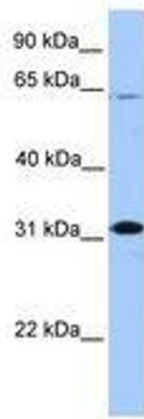
---

term use (up to 1 year)

Short term (less than 1 week): 4°C. Avoid freeze-thaw cycles.

## Images

---



**Image 1.**