



Datasheet for ABIN6737869
anti-SUZ12 antibody (C-Term)



[Go to Product page](#)

1 Image

Overview

Quantity:	100 µL
Target:	SUZ12
Binding Specificity:	C-Term
Reactivity:	Human, Mouse, Monkey
Host:	Rabbit
Clonality:	Polyclonal
Conjugate:	This SUZ12 antibody is un-conjugated
Application:	Western Blotting (WB)

Product Details

Immunogen:	Synthetic peptide from C-Terminus of human SUZ12 (Q15022, NP_056170). Percent identity by BLAST analysis: Human, Gorilla, Gibbon, Monkey, Galago, Marmoset (100%), Dog, Bovine, Bat, Rabbit, Horse, Opossum, Guinea pig, Platypus (92%), Mouse, Elephant, Turkey, Chicken (85%), Zebra finch (83%). Type of Immunogen: Synthetic peptide
Isotype:	IgG
Specificity:	Human SUZ12
Predicted Reactivity:	Percent identity by BLAST analysis: Human (100%) Dog, Bovine, Rabbit, Horse (92%) Mouse, Chicken (85%).
Purification:	Immunoaffinity purified

Target Details

Target:	SUZ12
Alternative Name:	SUZ12 (SUZ12 Products)
Background:	Name/Gene ID: SUZ12 Synonyms: SUZ12, ChET 9 protein, Joined to JAZF1 protein, CHET9, JJAZ1, KIAA0160, Polycomb protein SUZ12
Gene ID:	23512
NCBI Accession:	NP_056170
UniProt:	Q15022

Application Details

Application Notes:	Approved: WB Usage: ELISA titer using peptide based assay: 1:312500. Western Blot: Suggested dilution at 1 μ g/mL in 5 % skim milk / PBS buffer, and HRP conjugated anti-Rabbit IgG should be diluted in 1:50000 - 100000 as second antibody.
Comment:	Target Species of Antibody: Human
Restrictions:	For Research Use only

Handling

Format:	Lyophilized
Reconstitution:	Distilled Water.
Concentration:	Lot specific
Buffer:	Lyophilized from PBS with 2 % sucrose
Handling Advice:	Avoid repeat freeze-thaw cycles.
Storage:	4 °C,-20 °C
Storage Comment:	Long term: -20°C, the use of 50% glycerol is recommended if storing aliquots in -20°C for long term use (up to 1 year) Short term (less than 1 week): 4°C. Avoid freeze-thaw cycles.

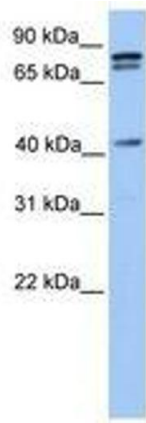


Image 1.