



[Go to Product page](#)

Datasheet for ABIN6737889  
**anti-RFX4 antibody (AA 109-158)**

1 Image

### Overview

Quantity:	100 µL
Target:	RFX4
Binding Specificity:	AA 109-158
Reactivity:	Rat, Human, Mouse, Dog, Rabbit, Horse, Cow, Guinea Pig, Zebrafish (Danio rerio), Pig, Bat, Monkey, Xenopus laevis
Host:	Rabbit
Clonality:	Polyclonal
Conjugate:	This RFX4 antibody is un-conjugated
Application:	Western Blotting (WB)

### Product Details

Immunogen:	Synthetic peptide located between aa109-158 of human RFX4 (Q33E94). Percent identity by BLAST analysis: Human, Chimpanzee, Gorilla, Gibbon, Monkey, Galago, Marmoset, Mouse, Rat, Elephant, Dog, Bovine, Bat, Rabbit, Horse, Pig, Opossum, Guinea pig, Platypus, Lizard, Xenopus, Zebrafish (100%), Turkey, Zebra finch, Chicken (92%).  Type of Immunogen: Synthetic peptide
Isotype:	IgG
Specificity:	Human RFX4
Predicted Reactivity:	Percent identity by BLAST analysis: Human, Mouse, Rat, Dog, Bovine, Rabbit, Horse, Pig, Guinea pig, Zebrafish (100%) Chicken (92%).

## Product Details

---

Purification: Immunoaffinity purified

## Target Details

---

Target: RFX4

Alternative Name: RFX4 ([RFX4 Products](#))

Background: Name/Gene ID: RFX4

Synonyms: RFX4, Regulatory factor X 4, Transcription factor RFX4, NYD-SP10

Gene ID: 5992

UniProt: [Q33E94](#)

## Application Details

---

Application Notes: Approved: WB

Usage: ELISA titer using peptide based assay: 1:312500. Western Blot: Suggested dilution at 0.5 µg/mL in 5 % skim milk / PBS buffer, and HRP conjugated anti-Rabbit IgG should be diluted in 1:50000 - 100000 as second antibody.

Comment: Target Species of Antibody: Human

Restrictions: For Research Use only

## Handling

---

Format: Lyophilized

Reconstitution: Distilled Water.

Concentration: Lot specific

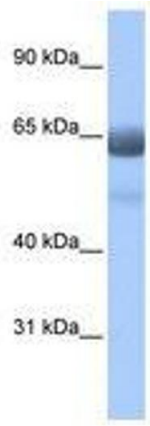
Buffer: Lyophilized from PBS with 2 % sucrose

Handling Advice: Avoid repeat freeze-thaw cycles.

Storage: 4 °C, -20 °C

Storage Comment: Long term: -20°C, the use of 50% glycerol is recommended if storing aliquots in -20°C for long term use (up to 1 year)

Short term (less than 1 week): 4°C. Avoid freeze-thaw cycles.



**Image 1.**