

Datasheet for ABIN6737890

anti-SSBP4 antibody (N-Term)



[Go to Product page](#)

1 Image

Overview

Quantity:	100 µL
Target:	SSBP4
Binding Specificity:	N-Term
Reactivity:	Human, Mouse, Cow, Dog, Rabbit, Zebrafish (Danio rerio), Bat, Monkey
Host:	Rabbit
Clonality:	Polyclonal
Conjugate:	This SSBP4 antibody is un-conjugated
Application:	Western Blotting (WB)

Product Details

Immunogen:	Synthetic peptide from N-Terminus of human SSBP4 (Q9BWW5, NP_001009998). Percent identity by BLAST analysis: Human, Chimpanzee, Gorilla, Gibbon, Monkey, Galago, Marmoset, Mouse, Dog, Bovine, Bat, Rabbit, Opossum, Platypus (100%), Rat, Guinea pig, Chicken, Xenopus (92%), Salmon, Zebrafish, Drosophila (85%). Type of Immunogen: Synthetic peptide
Isotype:	IgG
Specificity:	Human SSBP4
Predicted Reactivity:	Percent identity by BLAST analysis: Human, Dog, Bovine (100%) Guinea pig, Xenopus (92%) Zebrafish (85%).
Purification:	Immunoaffinity purified

Target Details

Target:	SSBP4
Alternative Name:	SSBP4 (SSBP4 Products)
Background:	Name/Gene ID: SSBP4 Synonyms: SSBP4
Gene ID:	170463
NCBI Accession:	NP_001009998
UniProt:	Q9BWG4

Application Details

Application Notes:	Approved: WB Usage: ELISA titer using peptide based assay: 1:1562500. Western Blot: Suggested dilution at 1 µg/mL in 5 % skim milk / PBS buffer, and HRP conjugated anti-Rabbit IgG should be diluted in 1:50000 - 100000 as second antibody.
Comment:	Target Species of Antibody: Human
Restrictions:	For Research Use only

Handling

Format:	Lyophilized
Reconstitution:	Distilled Water.
Concentration:	Lot specific
Buffer:	Lyophilized from PBS with 2 % sucrose
Handling Advice:	Avoid repeat freeze-thaw cycles.
Storage:	4 °C, -20 °C
Storage Comment:	Long term: -20°C, the use of 50% glycerol is recommended if storing aliquots in -20°C for long term use (up to 1 year) Short term (less than 1 week): 4°C. Avoid freeze-thaw cycles.

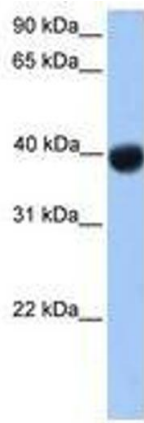


Image 1.